

INDIANA MICHIGAN POWER CO.

DC COOK NUCLEAR
BRIDGMAN, MI 49106

ASSEMBLY DRAWINGS FOR A KELLY KLOSURE FLAT-ROOF BUILDING "MEZZANINE ENCLOSURE"

K.K. ORDER #: 9369

P.O. #: 01570393

1) BUILDING STRUCTURE

A) BUILDING STRUCTURAL DESIGN CRITERIA

- | | | |
|----|---------------------|---|
| a) | BUILDING CODE: | 2009 IBC |
| b) | ROOF LOAD: | 20 PSF LIVE |
| c) | SNOW DRIFT LOAD: | N/A (INTERIOR USE) |
| d) | WIND LOAD: | N/A (MIN. 5 PSF LATERAL LOAD CAPACITY INCLUDED) |
| e) | SEISMIC: | DESIGN CATEGORY "B", SOIL SITE CLASS "D" |
| f) | OCCUPANCY CATEGORY: | II |

- B) THIS BUILDING HAS BEEN DESIGNED IN ACCORDANCE WITH THE BUILDING CODE AND BASIC STRUCTURAL DESIGN DATA LISTED ABOVE. THE BUILDING HAS BEEN DESIGNED AND ENGINEERED FROM A STRUCTURAL ASPECT ONLY. OTHER CODE COMPLIANCE ISSUES SUCH AS ENERGY EFFICIENCY, OCCUPANCY, EGRESS, HVAC, ELECTRICAL, MECHANICAL, FIRE SAFETY ETC. IS THE RESPONSIBILITY OF THE END USER OR ITS REPRESENTATIVES. MATERIAL SPECIFICATIONS ARE AVAILABLE UPON REQUEST.

IMPORTANT NOTES

PLEASE READ BEFORE BEGINNING ASSEMBLY OF BUILDING

WARRANTY WILL BE VOIDED IF THESE PROCEDURES ARE NOT FOLLOWED

Technical Support & Service

A Kelly Klosure Service Representative is just a phone call away.

Please feel free to call with any questions, suggestions or issues as they arise!

Please call 1-800-228-7230 and ask for Service during normal business hours.

If calling after hours, please leave a voice mail in the general mailbox.

Please include the Kelly Klosure Order Number shown to the left on this page when calling for service.

Damage & Shipping Shortages

Any damage or shipping shortages should be reported to Kelly Klosure within 15 days of delivery. Kelly will expedite replacement material. However, Kelly is not liable for replacement material purchased locally without prior approval.

Back Charges

Kelly Klosure must give prior approval of any work relating to shortages or errors in manufacturing. If prior approval is not given, back charges will be denied.

Exterior Fasteners

Due to vibration during the shipping process, some screws that hold the exterior steel sheeting to the panel frame may have been loosened. The building erector is to check and tighten all of the screws prior to building assembly. The screws are considered tight when the rubber washer is in complete contact with the sheeting and is not loose to the touch.

Bolt Installation

All bolts shall be "Snug Tight". A "Snug Tight" condition is the tightness that is attained with a few impacts of an impact wrench or the full effort of a crew member using an ordinary spud wrench to bring the connected plies into firm contact. Per ASTM A325, sufficient thread engagement is having the end of the bolt extending beyond or at least flush with the outer face of the nut.

Building Penetrations

Every effort was made by Kelly during the approval process to factory frame any required wall or roof penetrations, or otherwise ensure that framing will not be interfered with for field cut penetrations. Prior approval and instructions for modification must be obtained from Kelly before cutting or modifying any structural steel framework, otherwise the warranty will be void.

Manufacturer's Disclaimer

The manufacturer has designed and engineered this system. Variations and/or modifications to the system or components will void and nullify any and all warranties, both written and/or implied, and liability for defects in the system and its components. Manufacturer further accepts no responsibility and/or liability for obtaining or maintaining local, regional or national building permits, inspections or documents that may be required.

Lightning Protection Disclaimer

Kelly Klosure Systems roof & wall panels are manufactured from Galvalume® coated steel. To prevent galvanic corrosion, the roof and wall panels must not come into contact with, or water runoff from, copper, lead or copper bearing brasses. For lightning protection, aluminum conductors and aluminum or stainless steel clamps and fixtures are compatible with Galvalume® coated steel.

DRAWING INDEX

PAGE #1	BASIC BUILDING COMPONENTS
2	ELEVATIONS
3	MATERIAL LISTS
4	BUILDING NOTES
5	LOWER LEVEL BUILDING LAYFLAT
6	UPPER LEVEL BUILDING LAYFLAT
7	NEW BLOCKING LAYOUT PLAN VIEW
8	LOWER LEVEL LAYOUT PLAN VIEW
9	BASE SECTIONS
10	DOOR INSTALLATION INSTRUCTIONS
11	UPPER LEVEL LAYOUT PLAN VIEW
12	PLAN VIEWS
13	LOWER LEVEL PLAN VIEW DETAILS
14	UPPER LEVEL PLAN VIEW DETAILS
15	CROSS-SECTION & DETAILS
16	STAIR ITEM NUMBER LAYOUT PLAN VIEW
17	LANDING DETAILS
18	LOWER LEVEL STAIR HANDRAIL & GUARDRAIL DETAILS
19	UPPER LEVEL STAIR HANDRAIL & GUARDRAIL DETAILS


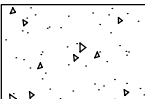


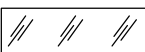
SUPPLEMENT SHEETS

SS-1	OPTIONAL WALL PANEL LIFTING ISOMETRIC
SS-2	OPTIONAL ROOF PANEL LIFTING ISOMETRIC
SS-3	EAVE FLASHING INSTALLATION AT BUILDING CORNER
SS-4	EQUIPMENT DOOR FLASHING INSTALLATION INSTRUCTIONS
SS-5	TYPICAL FLAT-ROOF ASSEMBLY SEQUENCE

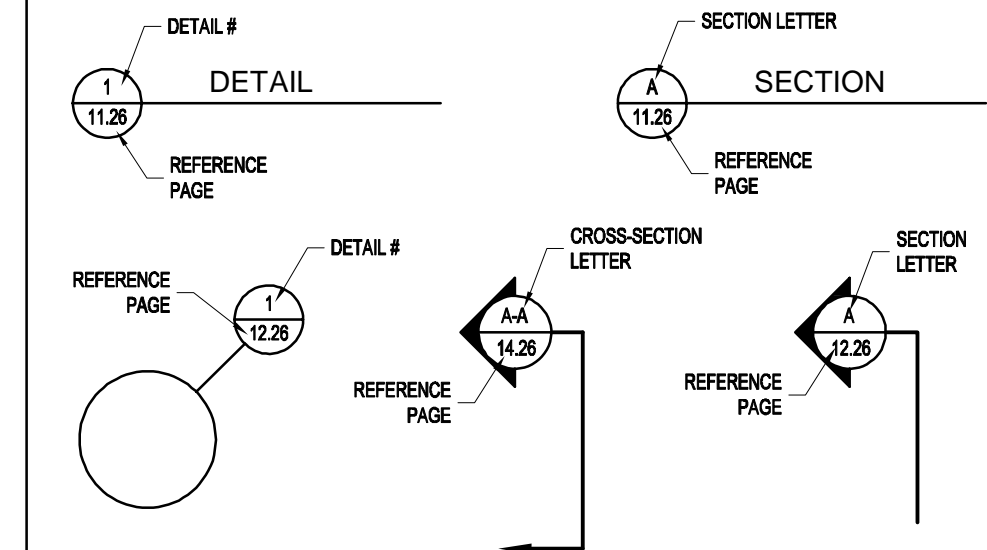
TOOL LIST	
Qty.	Description
1	TIN SNIPS
4	SPUD WRENCH (1/4" - 3/4" TAPER W/ CRESCENT WRENCH)
2	1/2" DRIVE RATCHETS
2	9/16" SOCKETS
2	3/4" SOCKETS
2	1 1/16" SOCKETS
2	ELECTRIC IMPACT WRENCH (1/2" DRIVE)
1	ROTARY HAMMER DRILL (MINIMUM 6 AMP, SDS STYLE)
1	3/8" SDS MASONRY DRILL BIT (MINIMUM LENGTH 6")
1	1/2" SDS MASONRY DRILL BIT (MINIMUM LENGTH 10")
1	SLEDGE HAMMER
1	3 LB HAMMER
2	C-CLAMP VISE GRIPS
2	C-CLAMP W/ 4"-6" OPENING
1	TAG LINE ROPE (75'-0" LONG)
1	PHILLIPS SCREWDRIVER
1	STANDARD SCREWDRIVER
1	P3 PHILLIPS SCREWDRIVER (FOR DOOR HINGE ADJUSTMENT)
1	ELECTRIC DRILL
1	#1 STEEL DRILL BIT
1	#10 STEEL DRILL BIT
1	7/16" STEEL DRILL BIT
1	9/16" STEEL DRILL BIT
1	11/16" STEEL DRILL BIT
1	CUTTING OIL
2	9/16" WRENCHES
2	3/4" WRENCHES
2	1 1/16" WRENCHES
2	5/16" NUT DRIVER BIT
2	3/8" NUT DRIVER BIT
1	100'-0" LONG TAPE MEASURE
1	CHALK LINE
2	STEP LADDERS
1	CAULKING GUN
1	FORK LIFT (TELE-HANDLER)
2	LARGE CROWBARS
1	RIVET GUN
OPTIONAL EQUIPMENT	
1	SCISSOR LIFT
1	ARTICULATING BOOM LIFT
2	SCAFFOLDING OR STAGING (ROLLING)
2	3/8" EYEBOLT (FOR LIFTING PANELS)
ROLL-UP DOOR INSTALLATION TOOLS	
- OPTIONAL METHODS FOR ATTACHING DOOR TRACK TO JAMB:	
OPTION #1: WELDED CONNECTION (WELDING EQUIPMENT NEEDED)	
OPTION #2: DRILLING & BOLTING (MAGNETIC BASE DRILL & CUTTING OIL RECOMMENDED)	
- 11/32" DRILL BITS (FOR PRE-DRILLING 3/8" SELF TAPPING SCREWS)	
- (2) 1/2" WINDING BARS	
- SLING (TO INSTALL CURTAIN ON THE BARREL)	
- VICE GRIPS (2 PAIR MINIMUM)	
- WATER LEVEL OR STRING LINE LEVEL (WATER LEVEL IS RECOMMENDED)	
- COMPLETE SOCKET SET	
- COMPLETE WRENCH SET	
- STANDARD & PHILLIPS SCREWDRIVERS	
- DRILL W/ COMPLETE SET OF BITS	
- IMPACT WRENCH	
- UTILITY KNIFE	
FOR ELECTRIC OPERATOR	
- WIRE STRIPPER	
- CHAIN BREAKER	

IMPORTANT NOTE:
OVERHEAD DOORS ARE SUPPLIED ONLY!
INSTALLATION & SERVICE IS BY OTHERS!
(INSTRUCTIONS FOR OVERHEAD DOOR ARE INCLUDED WITH THE DOOR)

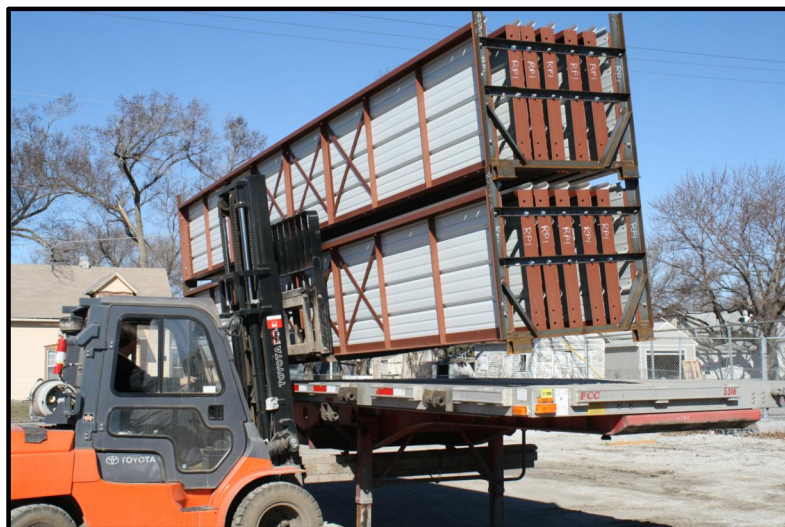
ARCHITECTURAL LEGEND

	EARTH
	CONCRETE
	RIGID INSULATION
	BATT INSULATION
	GLASS / PLEXIGLASS (ELEVATION)

REFERENCES



PANEL & PANEL RACK HANDLING TIPS



UNLOADING & LIFTING PANEL RACKS WITH A FORKLIFT

UPPER RACKS SHOULD BE REMOVED FROM THE TRUCK FIRST & PLACED AROUND THE WORKING AREA.



SHEETING OVERLAPS

PROTECTED ZONE

BOTTOM RACK FRAME

STORING PANEL RACKS IN STACKED POSITIONS

WHEN PANEL RACKS ARE STORED IN A STACKED POSITION (ONE ON TOP OF THE OTHER) ON SITE. THE FEET OF THE UPPER RACK MUST NEST INTO THE UPPER END OF THE BOTTOM RACK FRAMING (AS SHOWN). THIS KEEPS RACKS SPACED, MAINTAINING A PROTECTION ZONE FOR THE SHEETING OVERLAPS.

UPPER RACK FOOT

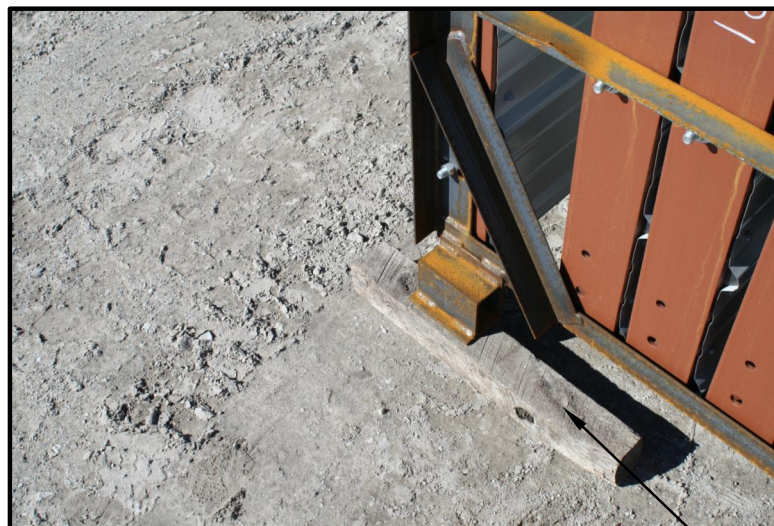


FORKLIFT FORKS

SHEETING OVERLAPS

SEPARATING PANEL RACKS

WHEN LIFTING RACKS ONE OFF THE OTHER WITH A FORKLIFT. SPECIAL CARE MUST BE TAKEN TO PREVENT THE FORKS OF THE FORKLIFT FROM DAMAGING THE SHEETING OVERLAPS THAT PROTRUDE ABOVE THE BOTTOM PANEL RACKS. THIS MATERIAL IS MORE SUSCEPTIBLE TO DAMAGE THEN THE PANEL FRAMES.



REMOVING PANELS FROM RACKS

WHEN PANEL RACKS ARE REMOVED FROM THE TRUCK AND PLACED AROUND THE STAGING AREA. THE FRONT TWO CORNERS OF EACH RACK SHOULD BE BLOCKED UP. THIS PREVENTS PANELS FROM TIPPING OUT AS PANELS ARE REMOVED. IF THIS IS NOT DONE THEN THERE IS THE POTENTIAL FOR PANEL DAMAGE.

LIFTING PANEL RACKS WITH SLINGS

AN OPTIONAL METHOD OF UNLOADING PANELS IS SHOWN IN THIS ILLUSTRATION. USING SLINGS HUNG FROM A CRANE OR CHERRY PICKER INSTEAD OF A FORKLIFT TO UNLOAD PANEL RACKS FROM THE TRUCK.



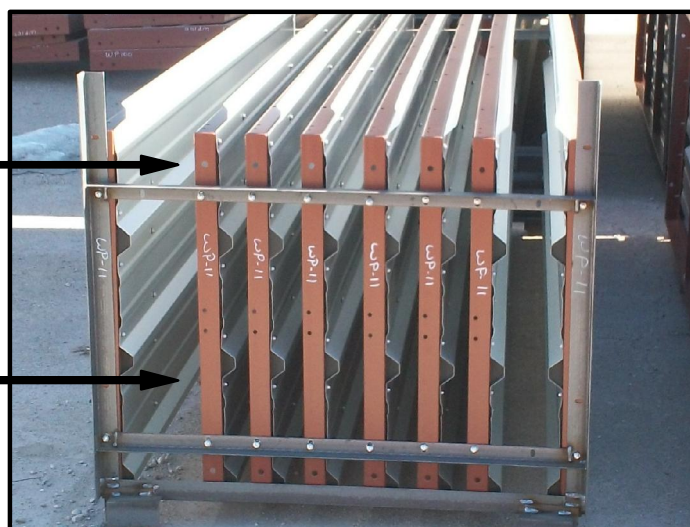
TOP RACK

SHEETING OVERLAPS (CAUTION!)

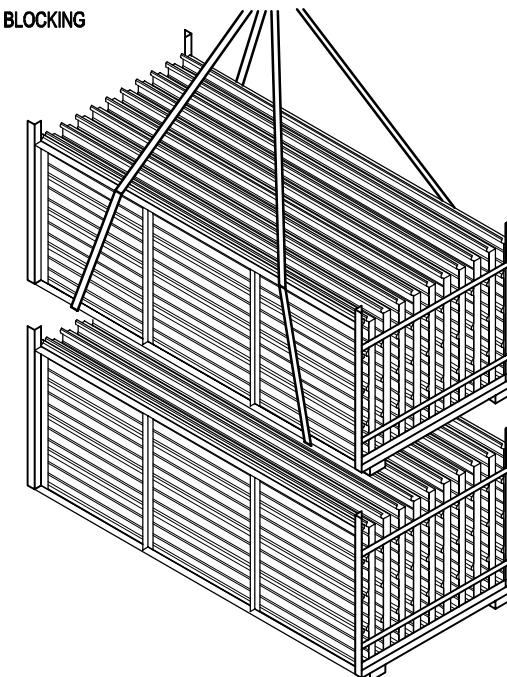
BOTTOM RACK

FORKLIFT FORKS

REMOVE PANELS STARTING WITH THIS SIDE OF THE RACK (PANEL FRAME SIDE)



BLOCKING



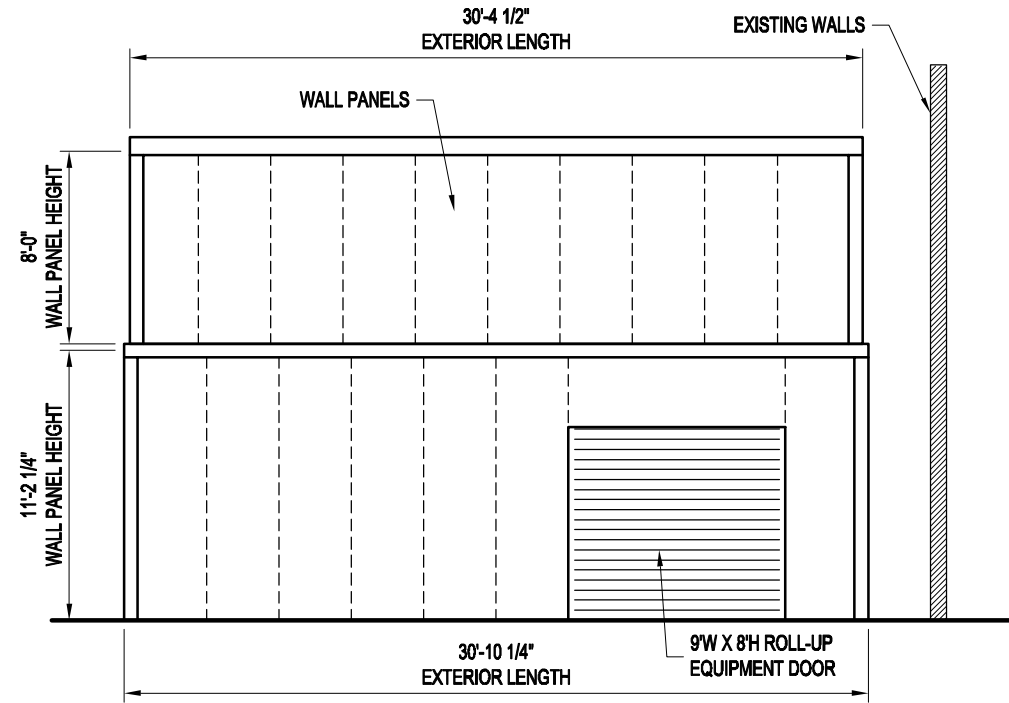
Mfr. by Kelly Group, Inc.
P.O. Box 1058
Fremont, NE 68026
Phone: 800-228-7230
Fax: 402-727-1363
Web: www.kellyklosure.com

PANEL & PANEL RACK
HANDLING TIPS
SHEET 1 OF 19

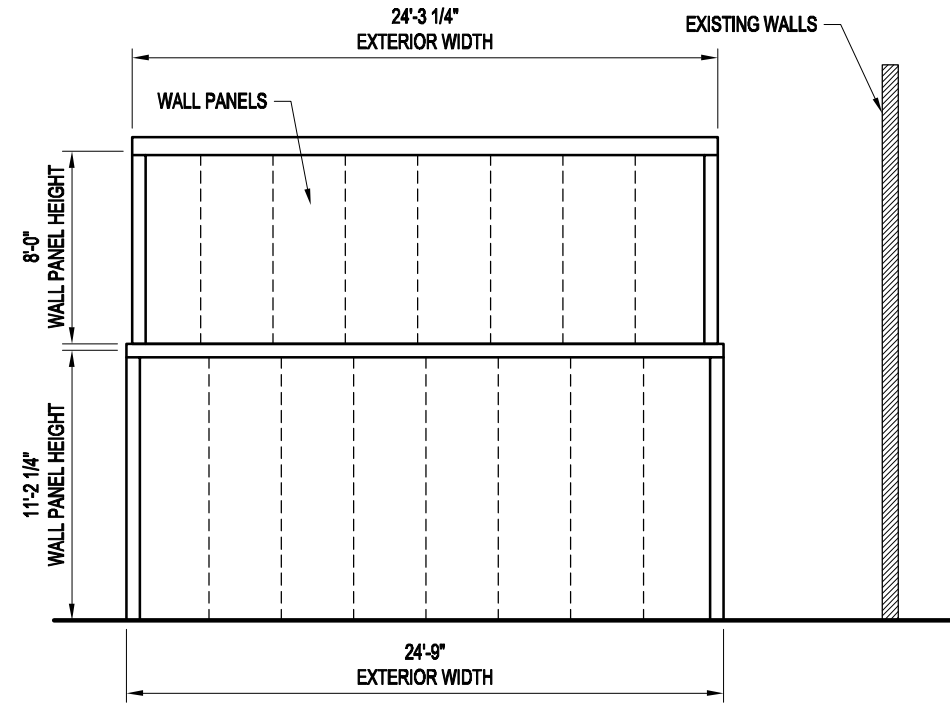
PROJECT TITLE: MEZANINE ENCLOSURE
DC COOK NUCLEAR
BRIDGMAN, MI 49106
BUYER: INDIANA MICHIGAN POWER CO.
K.K. ORDER NUMBER: 9369
BUYER P.O. NUMBER: 01570393

DRAWN BY: APC
DATE: 10/1/14
APPROVED BY: E. STEWART
DATE: 1/29/15
REVISION: 00
DATE: 2/19/15
SCALE: NO SCALE
K.K. QUOTE NUMBER: 140229DW1R2

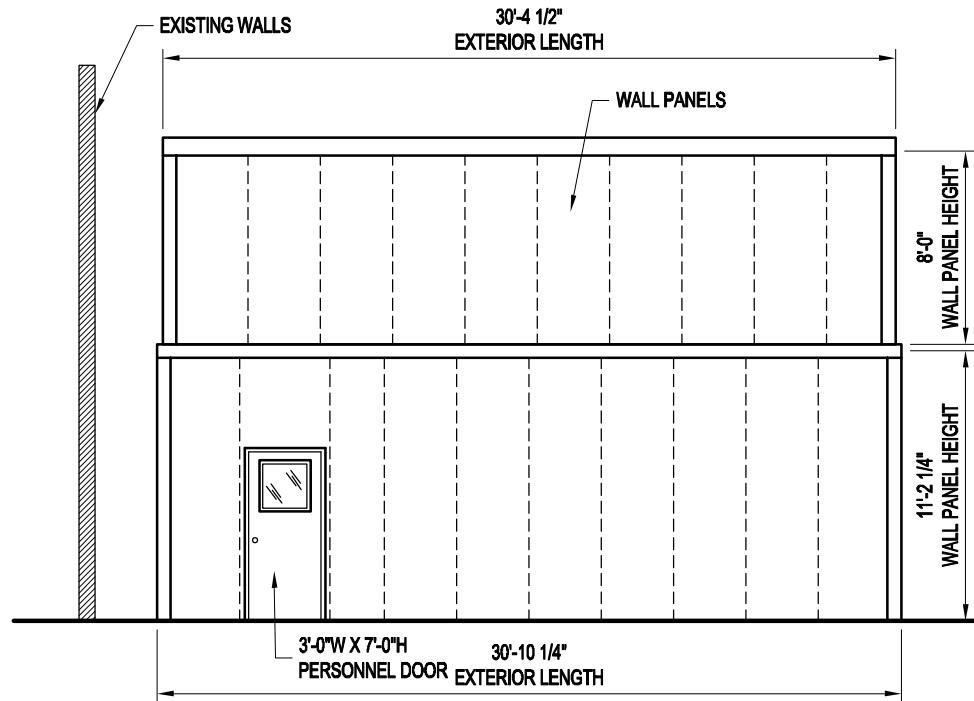
PROPRIETARY INFORMATION
THIS DRAWING AND THE DESIGN IT REPRESENTS ARE THE EXCLUSIVE PROPERTY OF KELLY GROUP, INC. NO PART OF THIS DRAWING IS TO BE REPRODUCED, COPIED, LOANED, EITHER WHOLLY OR IN PART, OR FOR ANY OTHER PURPOSE WITHOUT THE WRITTEN PERMISSION OF KELLY GROUP, INC. ANY UNAUTHORIZED USE OF THIS DRAWING IS STRICTLY PROHIBITED.



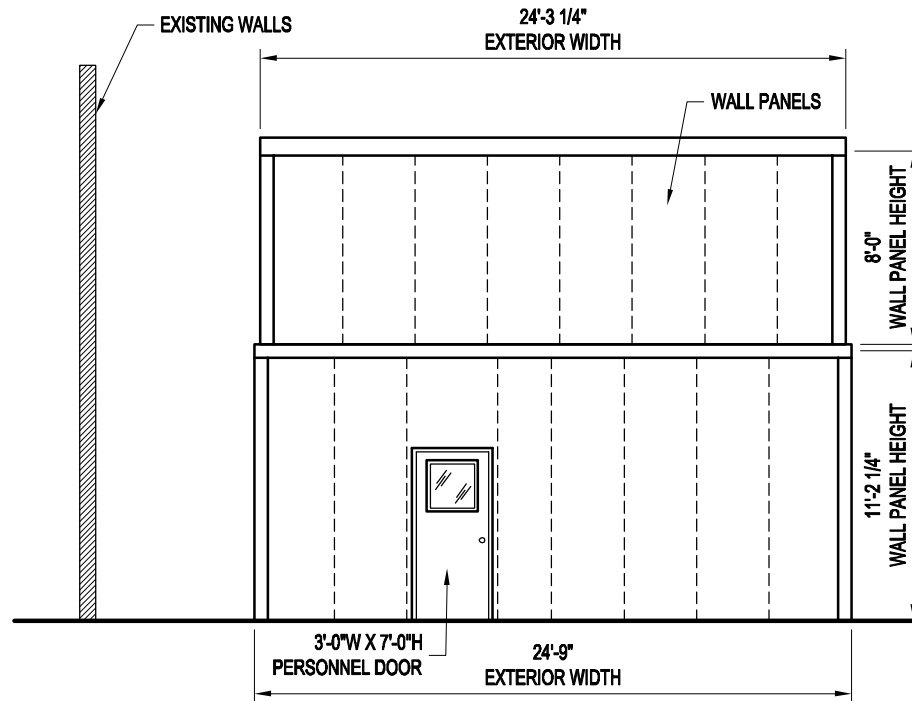
NORTH ELEVATION



WEST ELEVATION



SOUTH ELEVATION



EAST ELEVATION

<p>Kelly Klosure TOUGH BY DESIGN. CUSTOM BY CHOICE.</p>	
<p>Mfr. by Kelly Group, Inc. P.O. Box 1058 Fremont, NE 68026 Phone: 800-228-7230 Fax: 402-727-1363 Web: www.kellyklosure.com</p>	
<p>ELEVATIONS</p>	
<p>SHEET 2 OF 19</p>	
<p>PROPRIETARY INFORMATION THE DRAWINGS AND DESIGN COVERS ARE THE EXCLUSIVE PROPERTY OF KELLY GROUP, INC. NO PART OF THIS DRAWING IS TO BE REPRODUCED, COPIED, LOANED, REPRODUCED, OR OTHERWISE USED EXCEPT IN THE LIMITED MANNER AND FOR THE LIMITED PURPOSES AUTHORIZED BY KELLY GROUP, INC. IN WRITING.</p>	
<p>PROJECT TITLE: MEZZANINE ENCLOSURE DC COOK NUCLEAR BRIDGMAN, MI 49106</p>	
<p>BUYER: INDIANA MICHIGAN POWER CO. BUYER P.O. NUMBER: 01570393</p>	
<p>BUYER: 9369</p>	
<p>DRAWN BY: APC</p>	<p>DATE: 10/1/14</p>
<p>APPROVED BY: E. STEWART</p>	<p>DATE: 1/29/15</p>
<p>REVISION: 00</p>	<p>DATE: 2/19/15</p>
<p>SCALE: 1/8" = 1'-0"</p>	<p>K.K. QUOTE NUMBER: 140229DW1R2</p>

MATERIALS LIST

Walls: 29 Ga. IR - Light Stone 2" Insulation 29 Ga. White Liner		Roof: 29 Ga. IR - Light Stone 2" Insulation 29 Ga. White Liner	
Qty	Description		
9	RP-1	ROOF PANEL, 3'-0" x 23'-5" x 4"	
1	RP-2	ROOF PANEL, 2'-6.1/4" x 23'-5" x 4"	
18	WP-1	WALL PANEL, 3'-0" x 11'-2.1/4" x 2"	
1	WP-2	WALL PANEL, 3'-0" x 11'-2.1/4" x 2"	w/ Notch
1	WP-3	WALL PANEL, 3'-0" x 11'-2.1/4" x 2"	w/ Notch
1	WP-4	WALL PANEL, 2'-10.3/4" x 11'-2.1/4" x 2"	w/ Notch
2	WP-5	WALL PANEL, 3'-0" x 11'-2.1/4" x 2"	w/ Notch
2	WP-6	WALL PANEL, 3'-9" x 11'-2.1/4" x 2"	w/ 3'-0" x 7'-0" Personnel Door
1	WP-7	WALL PANEL, 2'-3" x 11'-2.1/4" x 2"	
1	WP-8	WALL PANEL, 2'-10.3/4" x 11'-2.1/4" x 2"	w/ Notch
1	WP-9	WALL PANEL, 2'-3" x 11'-2.1/4" x 2"	w/ Notch
1	WP-10	WALL PANEL, 3'-0" x 11'-2.1/4" x 2"	w/ Notch
1	WP-11	WALL PANEL, 3'-0" x 11'-2.1/4" x 2"	w/ Notch
1	WP-12	WALL PANEL, 3'-0" x 11'-2.1/4" x 2"	w/ Notch
1	WP-13	JAMB PANEL, 3'-0" x 11'-2.1/4" x 3"	w/ Notch
1	WP-14	JAMB PANEL, 3'-0" x 11'-2.1/4" x 3"	w/ Notch
32	WP-15	WALL PANEL, 3'-0" x 8'-0" x 2"	
1	WP-16	WALL PANEL, 2'-6.1/4" x 8'-0" x 2"	
2	WP-17	WALL PANEL, 2'-5" x 8'-0" x 2"	
1	WP-18	WALL PANEL, 2'-6.1/4" x 8'-0" x 2"	
1	HP-1	HEADER PANEL, 3'-2.1/4" x 9'-0" x 3"	
4	CEA-1	CORNER ERECTION ANGLE, 11'-1.7/8"	L1.1/2" x 1.1/2" x 1/8"
4	CEA-2	CORNER ERECTION ANGLE, 7'-11.5/8"	
18	EA-1	ERECTION ANGLE, 2'-11.7/8"	L3" x 2" x 3/16"
2	EA-2	ERECTION ANGLE, 2'-6.1/8"	L3" x 2" x 3/16"
2	EA-3	ERECTION ANGLE, 23'-4.1/2"	L3" x 2" x 3/16"
34	AA-1	ATTACHMENT ANGLE, 2'-11.7/8"	L3" x 2" x 3/16"
2	AA-2	ATTACHMENT ANGLE, 2'-10.5/8"	L3" x 2" x 3/16"
1	TB-1	NEW TUBE BLOCKING, 14'-0"	HSS 2.1/2" x 2.1/2" x 1/1 Ga.
1	S1	STAIR - 16'-7.13/16"	
1	S2	STAIR - 3'-7.3/4"	
1	SGR1	STAIR GUARDRAIL (RIGHT), 16'-5.7/8"	
1	SGR2	STAIR GUARDRAIL (LEFT), 16'-5.7/8"	
1	SGR3	STAIR GUARDRAIL (RIGHT), 4'-6.5/8"	
1	SGR4	STAIR GUARDRAIL (LEFT), 4'-6.5/8"	
1	SHR1	STAIR HANDRAIL (RIGHT), 19'-8.1/16"	
1	SHR2	STAIR HANDRAIL (LEFT), 17'-4.1/16"	
1	SHR3	STAIR HANDRAIL (RIGHT), 5'-3.1/16"	
1	SHR4	STAIR HANDRAIL (LEFT), 4'-5.7/16"	
4	SHE1	STAIR HANDRAIL EXTENSION	
1	L1	CHECKER PLATE LANDING, 4'x4'	
1	L2	LANDING TO STAIR BRACKET	
4	LC1	LANDING COLUMN, 5'-9.1/2"	
2	LGS1	LANDING GUARDRAIL SECTION, 3'-4.13/16"	
8	DIA1	DIAGONAL BRACING, 3'-2.13/16"	L2" x 2" x 1/8"
2		SMALL LIFTING ANGLES	L4" x 3" x 1/2"

1		Set Assembly Drawings (w/MSDS Sheets)	
1	Spray Can	Touch Up Paint - Trim & Sheets	Light Stone
1	Kit	Touch Up Paint - Stairs & Landing	Mfg. Std. Gray
1	Kit	Touch Up Paint - Handrails & Guardrail	Safety Yellow
1	Pint	Touch Up Paint - Panel Frames	Red Primer
1	Pint	Touch Up Paint - Door	Mfg. Door Gray
2		S. Parker Door Knob	
2		S. Parker Door Closer	
25		Outer Closure Strip	Imperial Rib
92	Ft.	R13 Batt Insulation	
5	Rolls	1/2" x 1.1/2" Adhesive Base Seal - 25Ft	
2	Tubes	Caulking - Clear Latex	
Building Bolts			
600		3/8" x 1" Bolt, Zinc Plated	
600		3/8" Nut, Zinc Plated	
225		1/2" x 1.1/2" Bolt, Zinc Plated	
22		1/2" x 2.1/2" Bolt, Zinc Plated	
247		1/2" Nut, Zinc Plated	
75		1/2" Washer	
5		5/8" x 1.3/4" Bolt, Zinc Plated	
5		5/8" Nut, Zinc Plated	
5		5/8" Washer, Zinc Plated	
64		3/8" Hilti KH-EZ Anchor	
20		1/2" Hilti KH-EZ Anchor	
275		Tek 5 Screws	
Equipment Door			
1		Equipment Door w/Hdwe	9 Wide x 8 High
25		3/8" x 1" Self Tapping Screws	
50		#4 Tek Screw	Light Stone
Building Flashing			
8	12'-0"	Corner Caps	Light Stone
12	10'-6"	Lower Level Top Flashing	Light Stone
12	10'-6"	Roof Flashing	Light Stone
3	10'-6"	Equipment Door Flashing	Light Stone
50		1/8" x 3/16" SS Rivet	Light Stone
600		#14 x 7/8" T-1 Screw w/ Washer	Light Stone



Mfr. by Kelly Group, Inc.
P.O. Box 1058
Fremont, NE 68026
Phone: 800-228-7230
Fax: 402-727-1363
Web: www.kellyklosure.com

MATERIALS LIST

SHEET 3 OF 19

PROPRIETARY INFORMATION
THE DRAWINGS AND DESCRIPTIONS ARE THE EXCLUSIVE PROPERTY OF KELLY GROUP, INC.
REPRODUCTION, COPIED, LOANED, EITHER WHOLLY OR PARTIALLY, OR OTHERWISE USED EXCEPT IN THE LIMITED
MANNER AUTHORIZED BY KELLY GROUP, INC. IS STRICTLY PROHIBITED. PENALTIES FOR VIOLATION WILL BE ENFORCED.

PROJECT TITLE:
MEZANINE ENCLOSURE
DC COOK NUCLEAR
BRIDGMAN, MI 49106

BUYER:
INDIANA MICHIGAN POWER CO.
BUYER P.O. NUMBER:
01570393

BUYER:
9369

SCALE: NO SCALE


DATE: 10/1/14
APPROVED BY: E. STEWART
1/29/15
REVISION: 00
2/19/15

K.K. QUOTE NUMBER:
14028DW1R2

- 1) FOUNDATIONS
 - A) THIS BUILDING IS BEING PLACED ON AN EXISTING BASE SURFACE.
 - B) ANCHOR BOLTS
 - a) PRESETTING OF ANCHOR BOLTS IS NOT REQUIRED. ANCHOR BOLTS WILL BE INSTALLED AS THE BUILDING IS ERECTED. KELLY RECOMMENDS THE HILTI KH-EZ SCREW ANCHOR AS SHOWN ON THE BUILDING BASE SECTION ON THE BASE SECTIONS PAGE.
 - b) CONCRETE ANCHORS WILL BE SUPPLIED WITH THE BUILDING SHIPMENT.
- 2) PANEL COMPONENTS AND FINISHES
 - A) PANEL FRAMES & STRUCTURAL STEEL COMPONENTS
 - a) ONE COAT, CORROSION RESISTANT, WATER REDUCIBLE, ALKYD EMULSION PRIMER
 - B) EXTERIOR STEEL SIDING AND ROOFING
 - a) 29 GA. 3/4" RIBBED "IMPERIAL RIB", DOES NOT REQUIRE SEAL TAPE OR STITCH SCREWS AT OVERLAPS
 - b) SIDING AND ROOFING TO BE GALVALUME COATED WITH PRIMER AND SILICONE MODIFIED POLYESTER PAINT FINISH
 - C) FACTORY INSTALLED INSULATION
 - a) INSULATION TO BE RIGID, CLOSED CELL, POLYISOCYANURATE WITH FOIL FACING
 - b) WALLS: 2" THICK (R-13)
 - c) ROOF: 2" THICK (R-13)
 - D) FACTORY INSTALLED STEEL INSULATION LINER
 - a) 29 GA. GALVALUME COATED STEEL WITH SILICONE MODIFIED POLYESTER PAINT FINISH
 - b) INSTALLED IN WALLS AND ROOF
- 3) PERSONNEL AND EQUIPMENT DOORS
 - A) 3'W X 7'H PERSONNEL DOOR FACTORY INSTALLED IN A 3'-9" WIDE WALL PANEL, TYPE "A" SHOWN ON PLAN VIEW
 - a) DOOR FRAME: 16 GA. STEEL, GALVANIZED (A-60), PRIMED AND FINISH PAINTED
 - b) DOOR LEAF: 18 GA. STEEL, HONEYCOMB CORE, GALVANIZED (A-60), PRIMED AND FINISH PAINTED
 - c) *ENTRY LOCK: STANDARD LOCKSET, S.PARKER B9160 SERIES, STAINLESS STEEL
 - d) HINGES: (3) 4.5" BALL BEARING, STANLEY FBB179, US26D FINISH
 - e) *CLOSER: STANDARD, S.PARKER 954, ALUMINUM FINISH
 - f) DOOR SWEEP: STANDARD, REESE 353C
 - g) WEATHER STRIPPING: NONE
 - h) THRESHOLD: MANUFACTURER STANDARD 3/16" FORMED STEEL
 - i) WINDOW: 24" X 24" PLEXIGLASS

1. (*) THESE ITEMS ARE FIELD INSTALLED TO PREVENT DAMAGE DURING SHIPMENT AND ERECTION
 2. CHANGES FROM LISTED HARDWARE MAY REQUIRE AN ADDITIONAL CHARGE.
 - B) ROLL-UP EQUIPMENT DOORS ARE AS NOTED ON THE PLAN VIEW PAGE DOOR SCHEDULE.

 EQUIPMENT DOORS ARE SUPPLIED ONLY. INSTALLATION AND SERVICE IS THE RESPONSIBILITY OF THE END USER. KELLY KLOSURE DOES NOT HAVE EXPERIENCE IN INSTALLATION OF EQUIPMENT DOORS AND THEREFORE CANNOT PROVIDE ASSISTANCE EXCEPT IN WARRANTY, SHIPPING SHORTAGES OR SHIPPING DAMAGE RELATED ISSUES.
- 4) STAIR & LANDING STRUCTURAL MATERIAL SPECIFICATIONS:
 - A) LANDING TUBE COLUMNS: Fymin = 46 KSI; ASTM A500 GRADE B (TS 2" X 2" X 3/16") WITH L 2" X 2" X 1/8" A36 CONNECTION CLIPS AND 3/8" X 8" X 8" A36 BASE PLATES.
 - B) LANDING PLATFORM: MC10X8.4 A36
 - C) LANDING DECK: 12 GA CHECKER PLATE A36
 - D) STAIRS: MC10X8.4 A36 STRINGERS WITH 1/8" CHECKER PLATE A36 TREADS.
 - E) GUARDRAIL COMPONENTS:
 - HORIZONTAL TUBES = TS 1 1/2" X 1 1/2" X 14 GA., ASTM A513-TYPE 1, Fymin = 32 KSI.
 - END ANGLES = L 1 1/2" X 1 1/2" X 1/8", ASTM A36, Fymin = 36 KSI.
 - KICK PLATE = L 4" X 3" X 1/4", ASTM A36, Fymin = 36 KSI.
 - CONNECTION AT LANDING COLUMNS = 12-24 X 1 1/4" TEK 5 SCREWS
 - F) STAIR GUARDRAILS & HANDRAILS:
 - ALL TUBES EXCEPT VERTICAL POSTS = TS 1 1/2" X 1 1/2" X 14 GA., ASTM A513-TYPE 1, Fymin = 32 KSI.
 - VERTICAL POSTS = TS 1 1/2" X 1 1/2" X 11 GA., ASTM A500 GRADE B, Fymin = 46 KSI. - MAXIMUM SPACING OF 90" ON CENTER.
 - TUBES FOR EXTENDED HANDRAIL BASE = TS 1 3/4" X 1 3/4" X 14 GA., ASTM A513-TYPE 1, Fymin = 32 KSI
 - G) OTHER STRUCTURAL STEEL SHAPES & BASE PLATES: FY = 36 KSI; ASTM A36
- 5) STAIRS AND GUARDRAIL DESIGN:
 - A) THE STAIRS, GUARDRAILS AND STAIR RAILS INCLUDED WITH THIS MODULAR MEZZANINE HAVE BEEN CONFIGURED IN CONFORMANCE WITH OSHA. THEY HAVE ALSO BEEN DESIGNED TO COMPLY WITH THE 2009 IBC REQUIREMENTS.
 - B) STAIRWAY WIDTH = 36"
 - C) MAX. RISER = 7.0"
 - D) MIN. RUN = 11.0"
 - E) STAIR GUARDRAIL HEIGHT = 42"
 - F) STAIR HANDRAIL HEIGHT = 34"
 - G) STAIR TREAD MATERIAL = CHECKER PLATE
 - H) GUARDRAIL HEIGHT = 42"
- 6) STAIR & LANDING COLORS (INTERIOR USE ONLY PAINT):
 - A) STAIRS, LANDINGS, AND LANDING COLUMNS: MANUFACTURER'S STANDARD GRAY
 - B) GUARDRAILS AND STAIR RAILS: MANUFACTURER'S STANDARD SAFETY YELLOW



Kelly Klosure
TOUGH BY DESIGN. CUSTOM BY CHOICE.

Mfr. by Kelly Group, Inc.
 P.O. Box 1058
 Fremont, NE 68026
 Phone: 800-228-7230
 Fax: 402-727-1363
 Web: www.kellyklosure.com

BUILDING NOTES

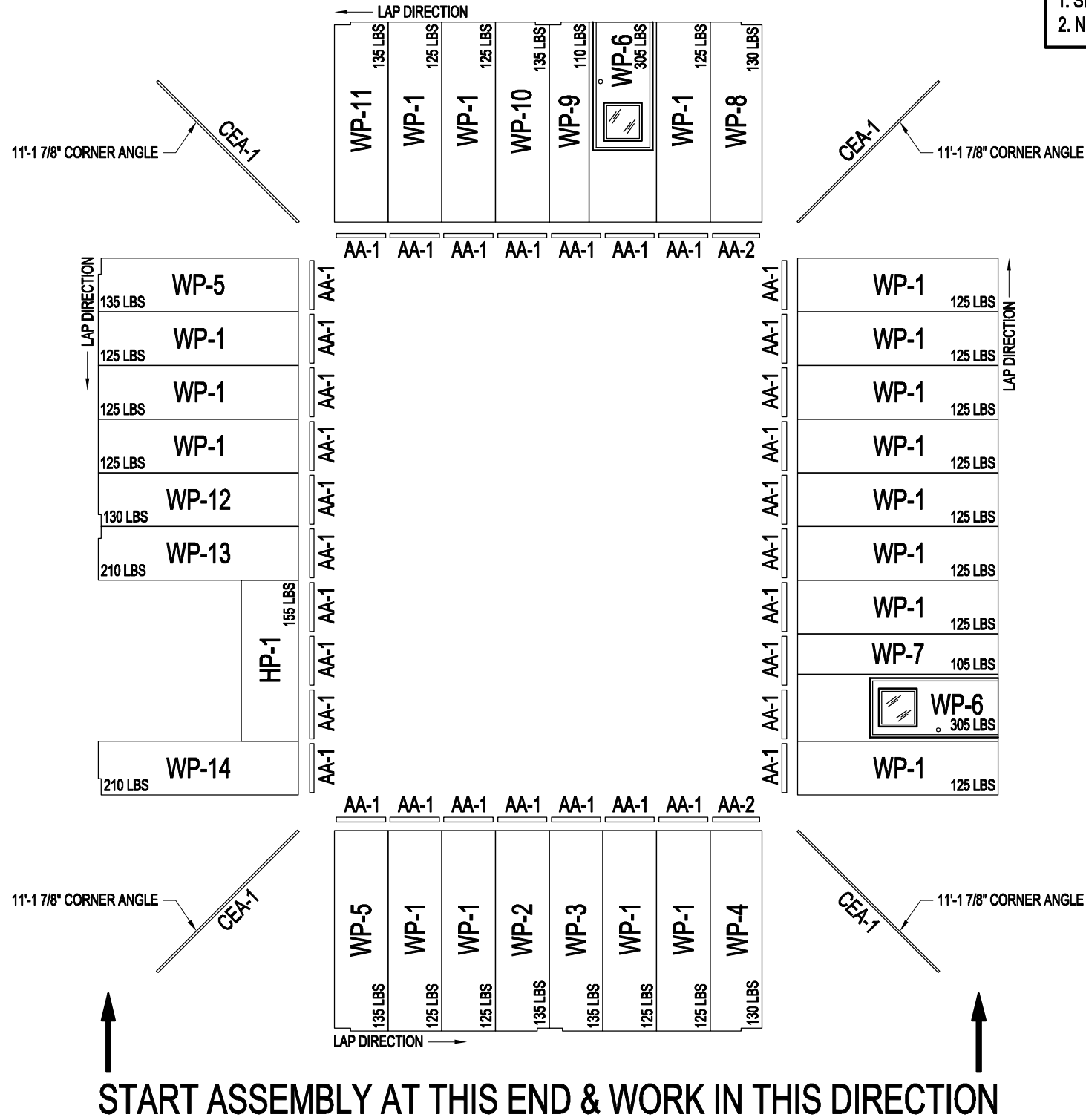
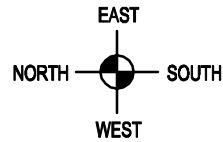
PAGE TITLE: **BUILDING NOTES**
 SHEET **4** OF **19**

PROJECT TITLE: **MEZZANINE ENCLOSURE
DC COOK NUCLEAR
BRIDGMAN, MI 49106**

BUYER: **INDIANA MICHIGAN POWER CO.**
 K.K. ORDER NUMBER: **9369**
 BUYER P.O. NUMBER: **01570393**

DRAWN BY: **APC**
 DATE: **10/1/14**
 APPROVED BY: **E. STEWART**
 DATE: **1/29/15**
 REVISION: **00**
 DATE: **2/19/15**
 SCALE: **NO SCALE**
 K.K. QUOTE NUMBER: **14029DW1R2**

PROPRIETARY INFORMATION
 THESE DRAWINGS AND THE DESIGN COVERS ARE THE EXCLUSIVE PROPERTY OF KELLY GROUP, INC. NO PART OF THESE DRAWINGS OR DESIGN COVERS MAY BE REPRODUCED, COPIED, LOANED, EXAMINED, CHANGED OR OTHERWISE USED EXCEPT IN THE LIMITED MANNER AUTHORIZED BY KELLY GROUP, INC. WITHOUT THE WRITTEN PERMISSION OF KELLY GROUP, INC.



NOTES:
 1. SEE CROSS-SECTION PAGE FOR BOLT LOCATIONS.
 2. NOT ALL HOLES IN PANELS REQUIRE BOLTS.

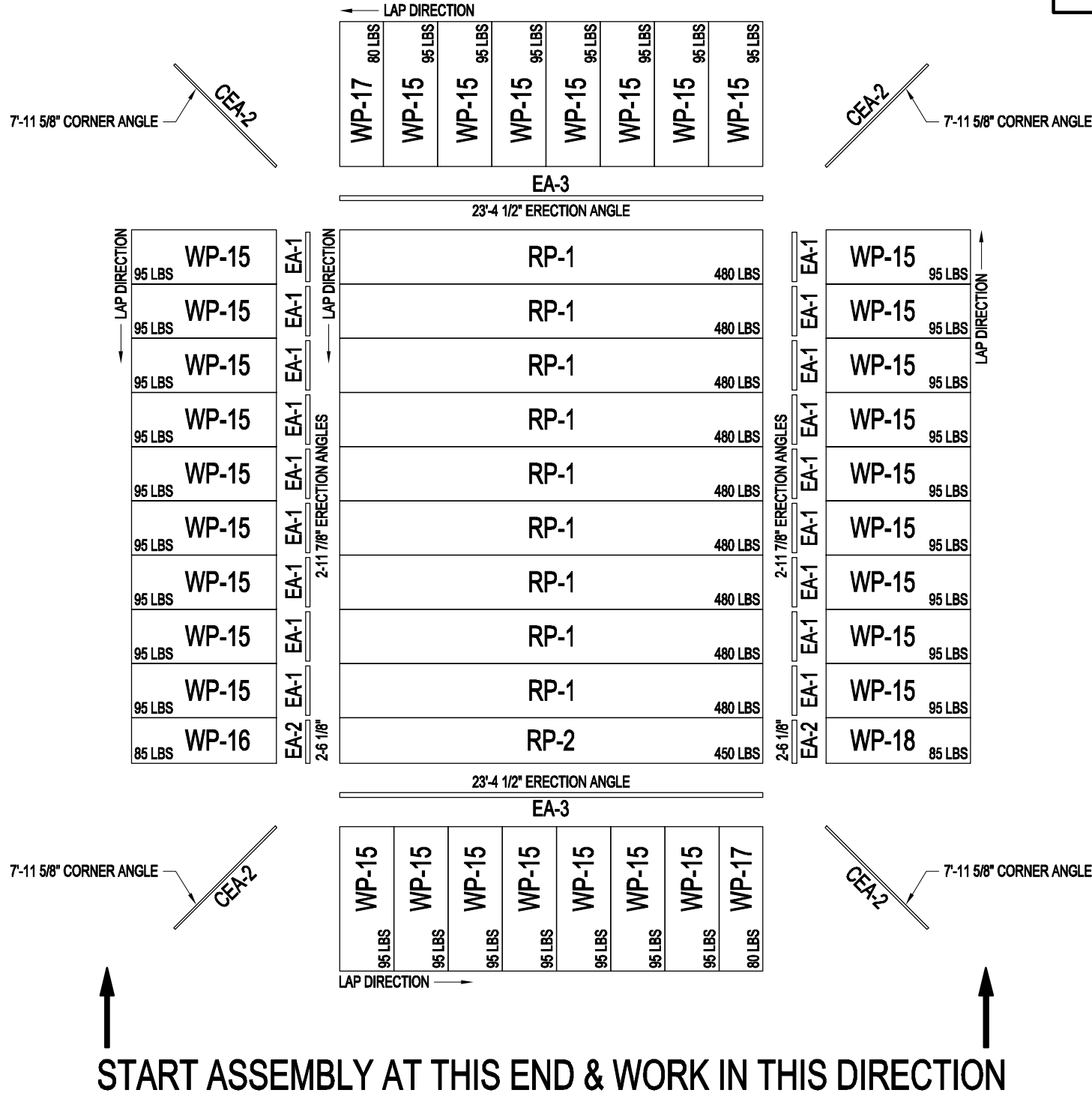
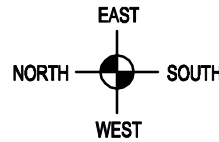
DRAWN BY: APC
 DATE: 10/1/14
 APPROVED BY: E. STEWART
 DATE: 1/29/15
 REVISION: 00
 DATE: 2/19/15
 SCALE: 1/8" = 1'-0"
 K.K. QUOTE NUMBER: 140229DW1R2

PROJECT TITLE: MEZZANINE ENCLOSURE
 DC COOK NUCLEAR
 BRIDGMAN, MI 49106
 BUYER: INDIANA MICHIGAN POWER CO.
 K.K. ORDER NUMBER: 9369
 BUYER P.O. NUMBER: 01570393

PAGE TITLE: LOWER LEVEL BUILDING LAYFLAT
 SHEET 5 OF 19
THE DRAWINGS AND DESIGN COVERS ARE THE EXCLUSIVE PROPERTY OF KELLY GROUP, INC. ANY REPRODUCTION, COPIED, LOANED, REPRODUCED, TRANSMITTED, CHANGED OR OTHERWISE USED EXCEPT IN THE LIMITED MANNER AUTHORIZED BY KELLY GROUP, INC. IS STRICTLY PROHIBITED. KELLY GROUP, INC. SHALL NOT BE RESPONSIBLE FOR DAMAGES OF ANY KIND OR NATURE.

Mfr. by Kelly Group, Inc.
 P.O. Box 1058
 Fremont, NE 68026
 Phone: 800-228-7230
 Fax: 402-727-1363
 Web: www.kellyklosure.com

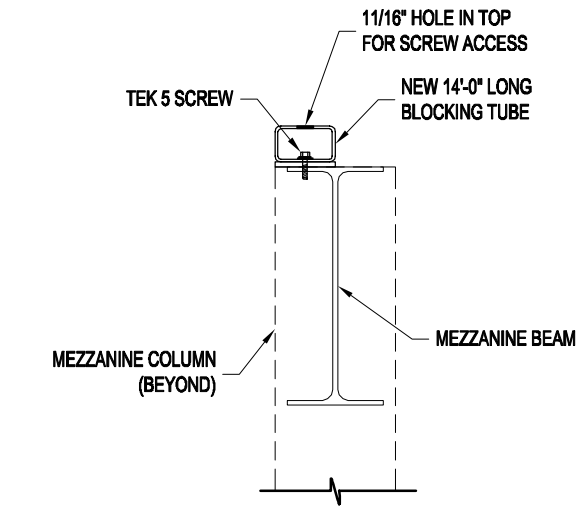
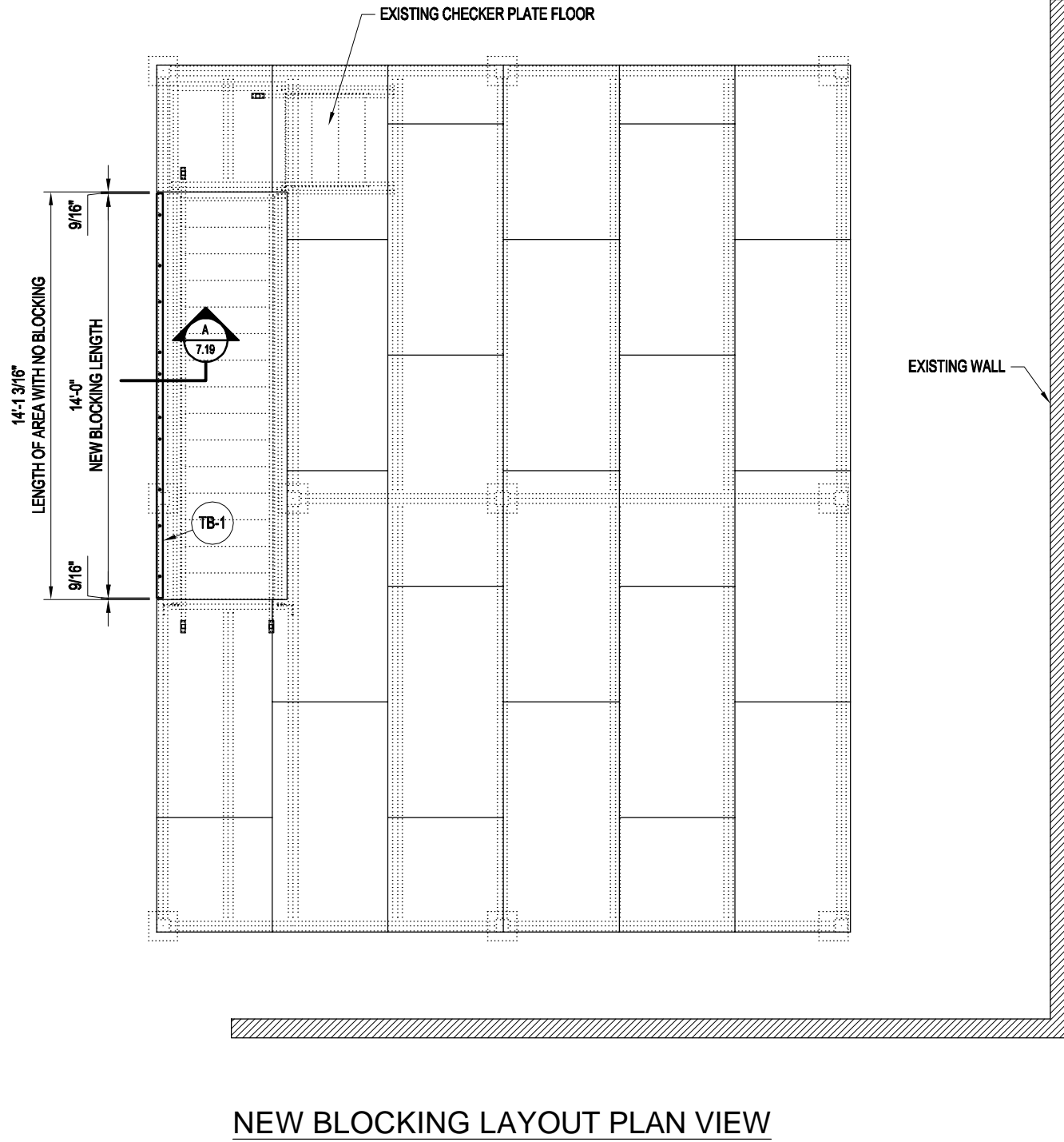
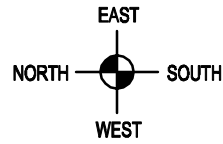




NOTES:
 1. SEE CROSS-SECTION PAGE FOR BOLT LOCATIONS.
 2. NOT ALL HOLES IN PANELS REQUIRE BOLTS.

UPPER LEVEL BUILDING LAYFLAT

DRAWN BY: APC DATE: 10/1/14 APPROVED BY: E. STEWART DATE: 1/29/15 REVISION: 00 DATE: 2/19/15 SCALE: 1/8" = 1'-0"	PROJECT TITLE: MEZZANINE ENCLOSURE DC COOK NUCLEAR BRIDGMAN, MI 49106	BUYER: INDIANA MICHIGAN POWER CO. K.K. ORDER NUMBER: 9369	BUYER P.O. NUMBER: 01570393	PAGE TITLE: UPPER LEVEL BUILDING LAYFLAT SHEET 6 OF 19	PROPRIETARY INFORMATION <small>THE DRAWINGS AND DESIGN COVERS ARE THE EXCLUSIVE PROPERTY OF KELLY GROUP, INC. ANY REPRODUCTION, COPIED, LOANED, EXHIBITED, CHANGED OR OTHERWISE USED WITHOUT THE WRITTEN PERMISSION OF KELLY GROUP, INC. IS STRICTLY PROHIBITED. © 2014 KELLY GROUP, INC. ALL RIGHTS RESERVED.</small>
Mfr. by Kelly Group, Inc. P.O. Box 1058 Fremont, NE 68026 Phone: 800-228-7230 Fax: 402-727-1363 Web: www.kellyklosure.com					



A
7.19 NEW BLOCKING ATTACHMENT DETAIL
SCALE: 1 1/2" = 1'-0"

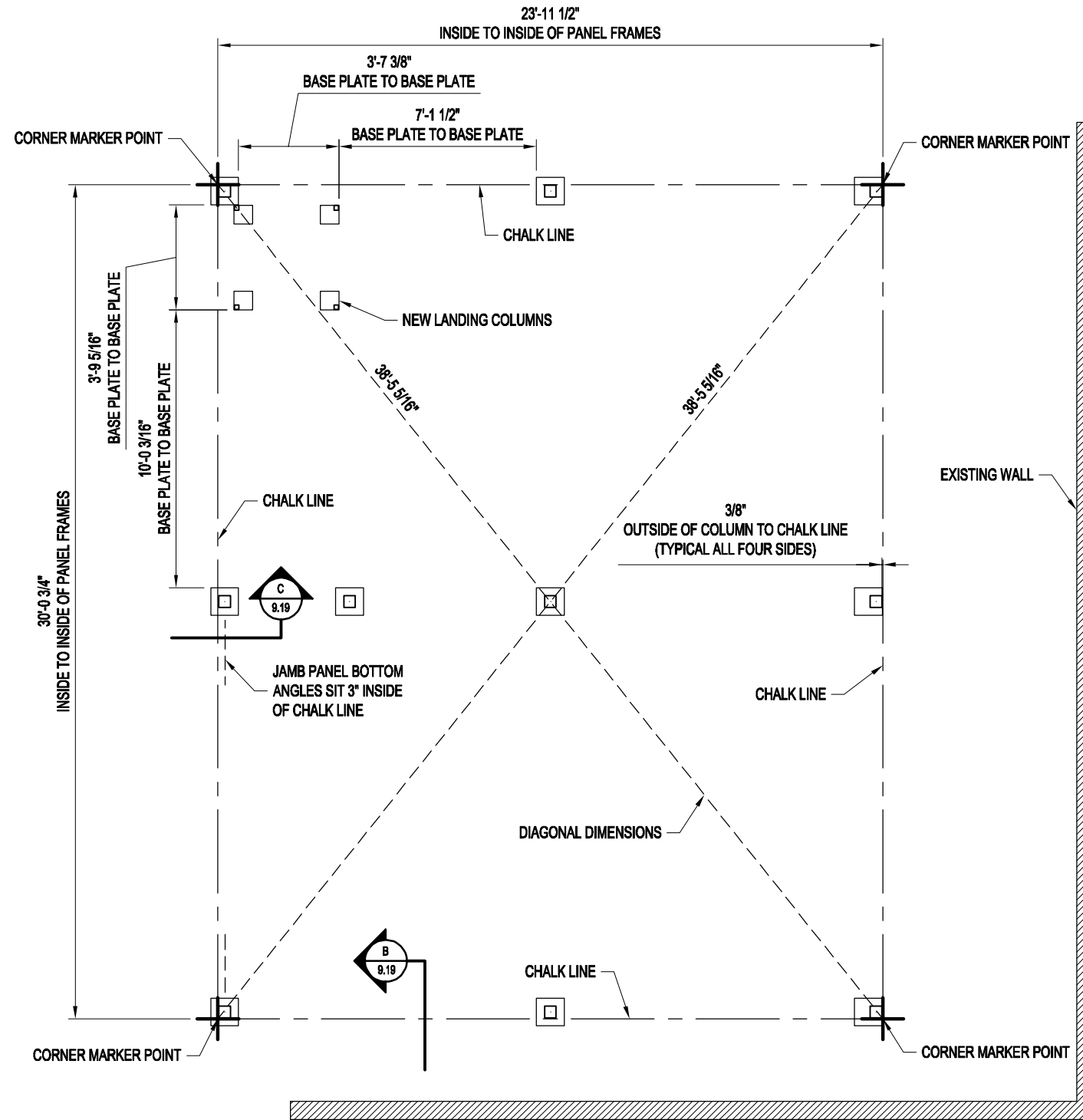
DRAWN BY: APC	DATE: 10/1/14	APPROVED BY: E. STEWART	DATE: 1/29/15	REVISION: 00	DATE: 2/19/15	SCALE: 3/16" = 1'-0"	K.K. QUOTE NUMBER: 14022DW1R2
------------------	------------------	----------------------------	------------------	-----------------	------------------	-------------------------	----------------------------------

PROJECT TITLE: MEZZANINE ENCLOSURE DC COOK NUCLEAR BRIDGMAN, MI 49106	BUYER: INDIANA MICHIGAN POWER CO. K.K. ORDER NUMBER: 9369	BUYER P.O. NUMBER: 01570393
--	--	--------------------------------

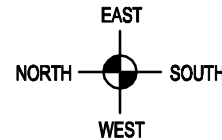
PAGE TITLE: NEW BLOCK BLOCKING LAYOUT PLAN VIEW	SHEET 7 OF 19	PROPRIETARY INFORMATION <small>THE DRAWINGS AND DESIGN COVERS ARE THE EXCLUSIVE PROPERTY OF KELLY GROUP, INC. ANY REPRODUCTION, COPIED, LOANED, REPRODUCED, CHANGED OR OTHERWISE USED EXCEPT IN THE LIMITED MANNER AUTHORIZED BY KELLY GROUP, INC. WILL BE AT THE USER'S SOLE RISK AND WITHOUT LIABILITY TO KELLY GROUP, INC.</small>
---	---------------	--

Mfr. by Kelly Group, Inc.
P.O. Box 1058
Fremont, NE 68026
Phone: 800-228-7230
Fax: 402-727-1363
Web: www.kellyklosure.com





LOWER LEVEL LAYOUT PLAN VIEW



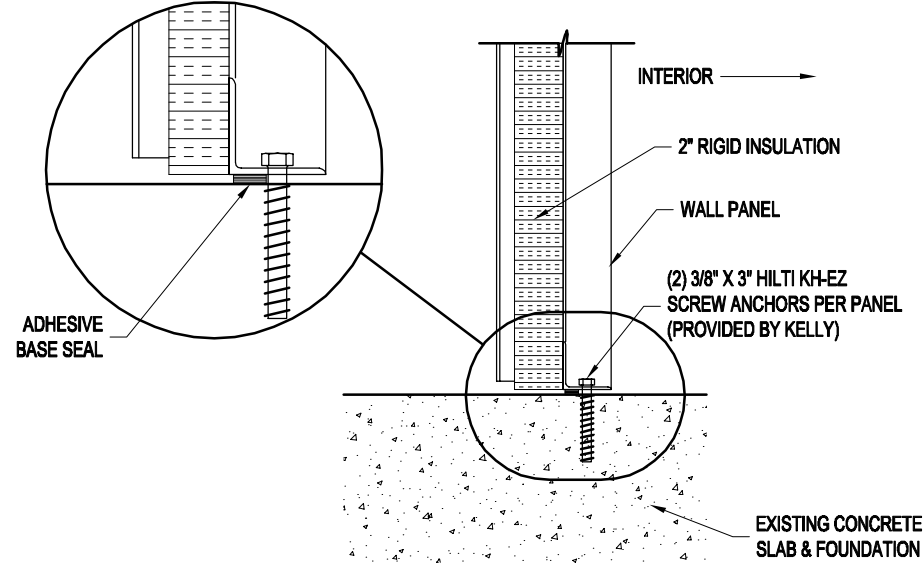
STEP #1 - MARKER POINTS
 USING THE DIMENSIONS AS SHOWN, MARK THE FOUR INSIDE BUILDING CORNER DIMENSIONS.

STEP #2 - DIAGONAL MEASUREMENT
 MEASURE THE DIAGONALS (DIAGONAL MEASUREMENTS MUST BE EQUAL), CORRECT IF NECESSARY BY SHIFTING THE CORNERS WITHOUT CHANGING THE LENGTH OR WIDTH DIMENSIONS.

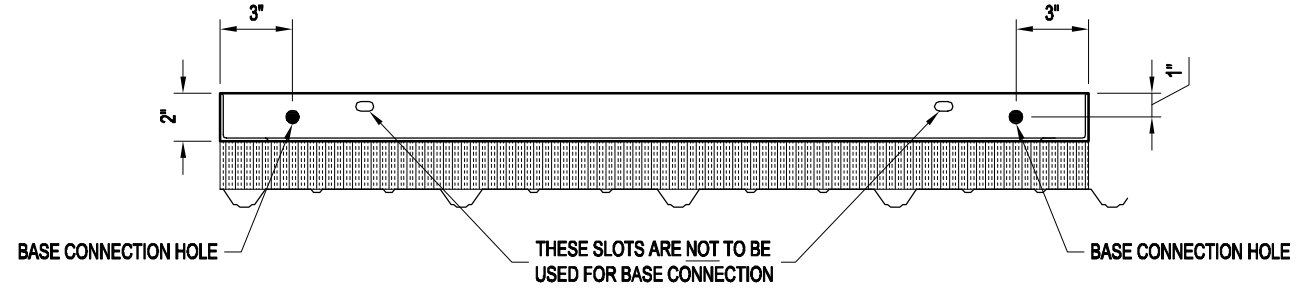
STEP #3 - CHALK LINE
 USING THE SQUARED MARKER POINTS, SNAP A CHALK LINE AS SHOWN. (THE CHALK LINE SIGNIFIES THE INSIDE BUILDING DIMENSIONS)

DRAWN BY: APC	DATE: 10/1/14	APPROVED BY: E. STEWART	DATE: 1/29/15	REVISION: 00	DATE: 2/19/15	SCALE: 3/16" = 1'-0"	K.K. QUOTE NUMBER: 14022DW1R2	BUYER: INDIANA MICHIGAN POWER CO.	BUYER P.O. NUMBER: 01570393	K.K. ORDER NUMBER: 9369	PROJECT TITLE: MEZZANINE ENCLOSURE DC COOK NUCLEAR BRIDGMAN, MI 49106	PAGE TITLE: LOWER LEVEL LAYOUT PLAN VIEW	PROPRIETARY INFORMATION THE DRAWINGS AND THE DESIGN COVERS ARE THE EXCLUSIVE PROPERTY OF KELLY GROUP, INC. ANY REPRODUCTION, COPIED, LOANED, REPRODUCED, CHANGED OR OTHERWISE USED EXCEPT IN THE LIMITED MANNER AUTHORIZED BY KELLY GROUP, INC. IS STRICTLY PROHIBITED. PENALTIES FOR VIOLATION WILL BE ENFORCED.
											Mfr. by Kelly Group, Inc. P.O. Box 1058 Fremont, NE 68026 Phone: 800-228-7230 Fax: 402-727-1363 Web: www.kellyklosure.com	SHEET 8 OF 19	

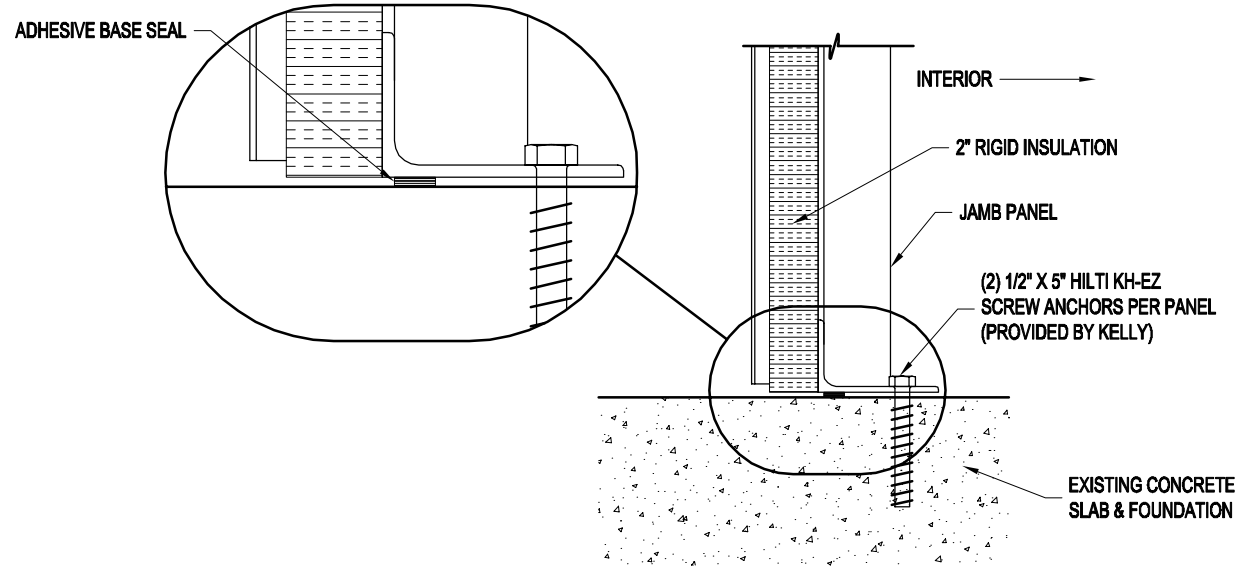




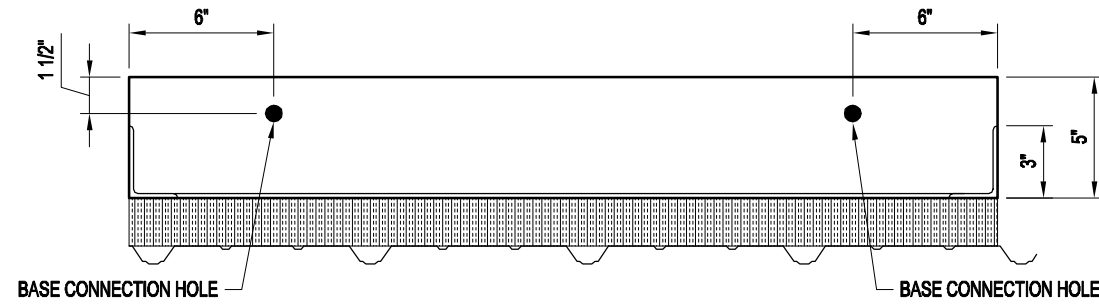
B LOWER LEVEL PANEL BASE SECTION
8.19 SCALE: 1 1/2" = 1'-0"



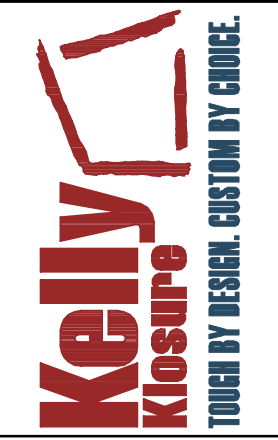
BASE CONNECTION SPACING DETAIL
SCALE: 1 1/2" = 1'-0"



C JAMB PANEL BASE SECTION
8.19 SCALE: 1 1/2" = 1'-0"



BASE CONNECTION SPACING DETAIL
SCALE: 1 1/2" = 1'-0"



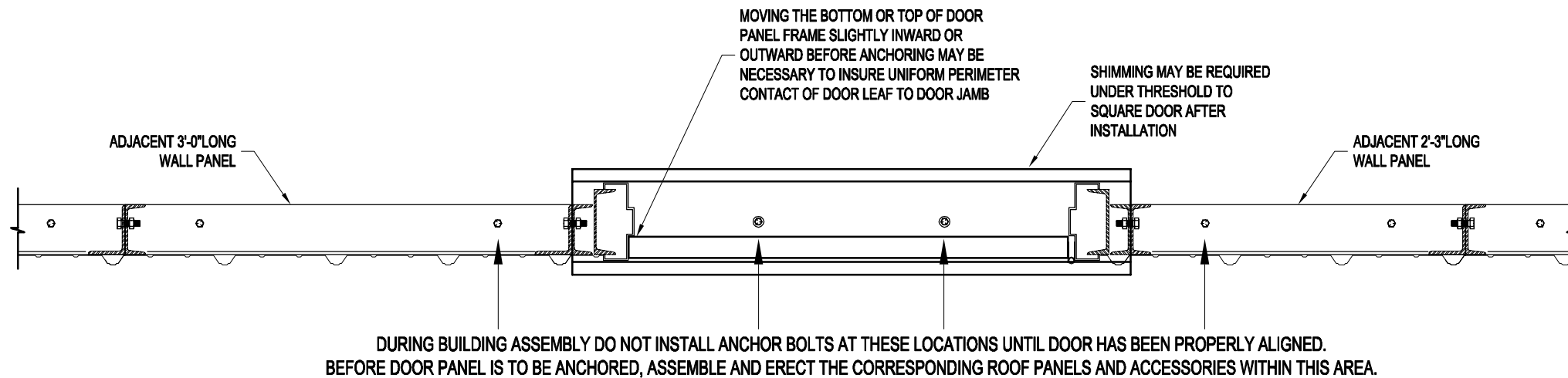
Mfr. by Kelly Group, Inc.
P.O. Box 1058
Fremont, NE 68026
Phone: 800-228-7230
Fax: 402-727-1363
Web: www.kellyklosure.com

PAGE TITLE: BASE SECTIONS
SHEET 9 OF 19
PROPRIETARY INFORMATION
THIS DRAWING AND THE DESIGN IT COVERS ARE THE EXCLUSIVE PROPERTY OF KELLY GROUP, INC. NO PART OF THIS DRAWING OR DESIGN MAY BE REPRODUCED, COPIED, LOANED, EITHER WHOLLY OR PARTIALLY, OR IN ANY MANNER WITHOUT THE WRITTEN PERMISSION OF KELLY GROUP, INC. ANY VIOLATION OF THIS PERMISSION SHALL BE SUBJECT TO LEGAL ACTION.

PROJECT TITLE: MEZZANINE ENCLOSURE
DC COOK NUCLEAR
BRIDGMAN, MI 49106
BUYER: INDIANA MICHIGAN POWER CO.
K.K. ORDER NUMBER: 9369
BUYER P.O. NUMBER: 01570393
DRAWN BY: APC
DATE: 10/1/14
APPROVED BY: E. STEWART
DATE: 1/29/15
REVISION: 00
DATE: 2/19/15
SCALE: 1 1/2" = 1'-0"
K.K. QUOTE NUMBER: 140229W1R2

ATTENTION INSTALLER:


DOOR PANEL MUST BE POSITIONED AND ADJUSTED IN THE FIELD. DUE TO CONDITIONS OF THE FOUNDATION / FLOOR, WE HAVE NO CONTROL OVER PROPER ALIGNMENT OF DOOR PANEL.

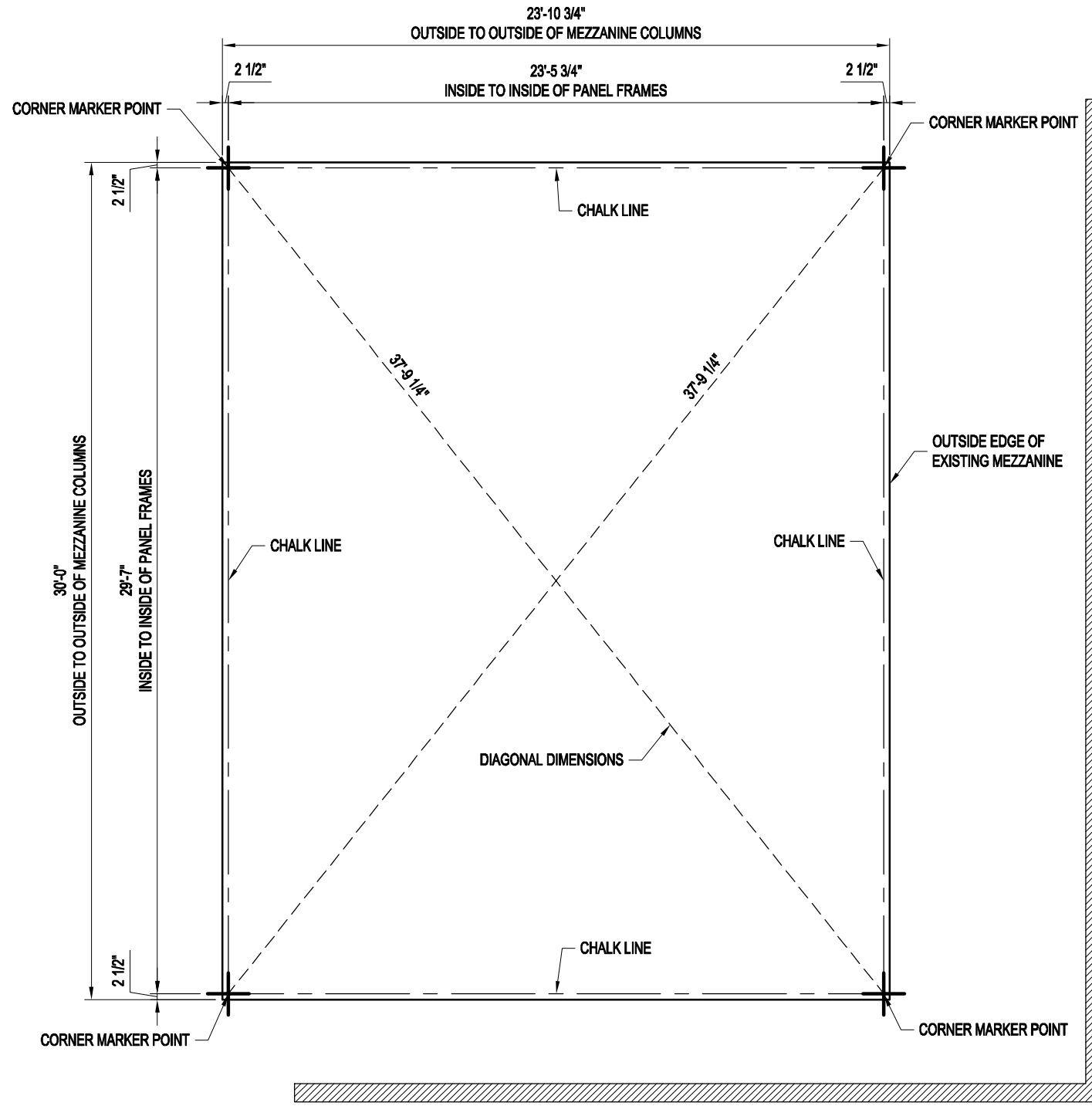
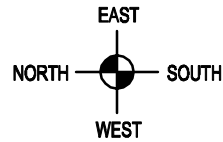


FACTORY QUALITY CONTROL
DOORS ARE INSPECTED AT THE MANUFACTURING FACILITY FOR SQUARENESS AND PROPER DIMENSIONS BEFORE SHIPMENT. IF PRODUCT DAMAGE IS INCURRED DURING SHIPMENT, THIS DAMAGE MUST BE NOTED ON THE RECEIVING NOTICE AT THE TIME OF OFF LOADING AT THE BUILDING SITE. THE MANUFACTURER MUST BE NOTIFIED OF SUCH DAMAGE IMMEDIATELY.

IMPORTANT NOTE:
OVERHEAD DOORS ARE SUPPLIED ONLY!
INSTALLATION & SERVICE BY OTHERS!
(INSTRUCTIONS FOR OVERHEAD DOOR ARE INCLUDED WITH THE DOOR)

FOR FACTORY ASSISTANCE IN DOOR ALIGNMENT CALL 800-228-7230

 <p>Kelly Klosure TOUGH BY DESIGN. CUSTOM BY CHOICE.</p>	
<p>Mfr. by Kelly Group, Inc. P.O. Box 1058 Fremont, NE 68026 Phone: 800-228-7230 Fax: 402-727-1363 Web: www.kellyklosure.com</p>	
<p>DOOR INSTALLATION INSTRUCTIONS</p>	
<p>SHEET 10 OF 19</p>	
<p><small>THE DRAWINGS AND THE DESIGN COVERS ARE THE EXCLUSIVE PROPERTY OF KELLY GROUP, INC. ANY REPRODUCTION, COPIED, LOANED, EXHIBITED, CHANGED OR OTHERWISE USED EXCEPT IN THE LIMITED MANNER AUTHORIZED BY KELLY GROUP, INC. WILL BE AT THE USER'S SOLE RISK AND WITHOUT LIABILITY TO KELLY GROUP, INC.</small></p>	
<p>PROJECT TITLE: MEZANINE ENCLOSURE DC COOK NUCLEAR BRIDGMAN, MI 49106</p>	<p>BUYER: INDIANA MICHIGAN POWER CO. K.K. ORDER NUMBER: 9369</p>
<p>BUYER P.O. NUMBER: 01570393</p>	<p>PROPRIETARY INFORMATION</p>
<p>DRAWN BY: APC</p>	<p>DATE: 10/1/14</p>
<p>APPROVED BY: E. STEWART</p>	<p>DATE: 1/29/15</p>
<p>REVISION: 00</p>	<p>DATE: 2/19/15</p>
<p>SCALE: 1" = 1'-0"</p>	<p>K.K. QUOTE NUMBER: 140828DW1R2</p>



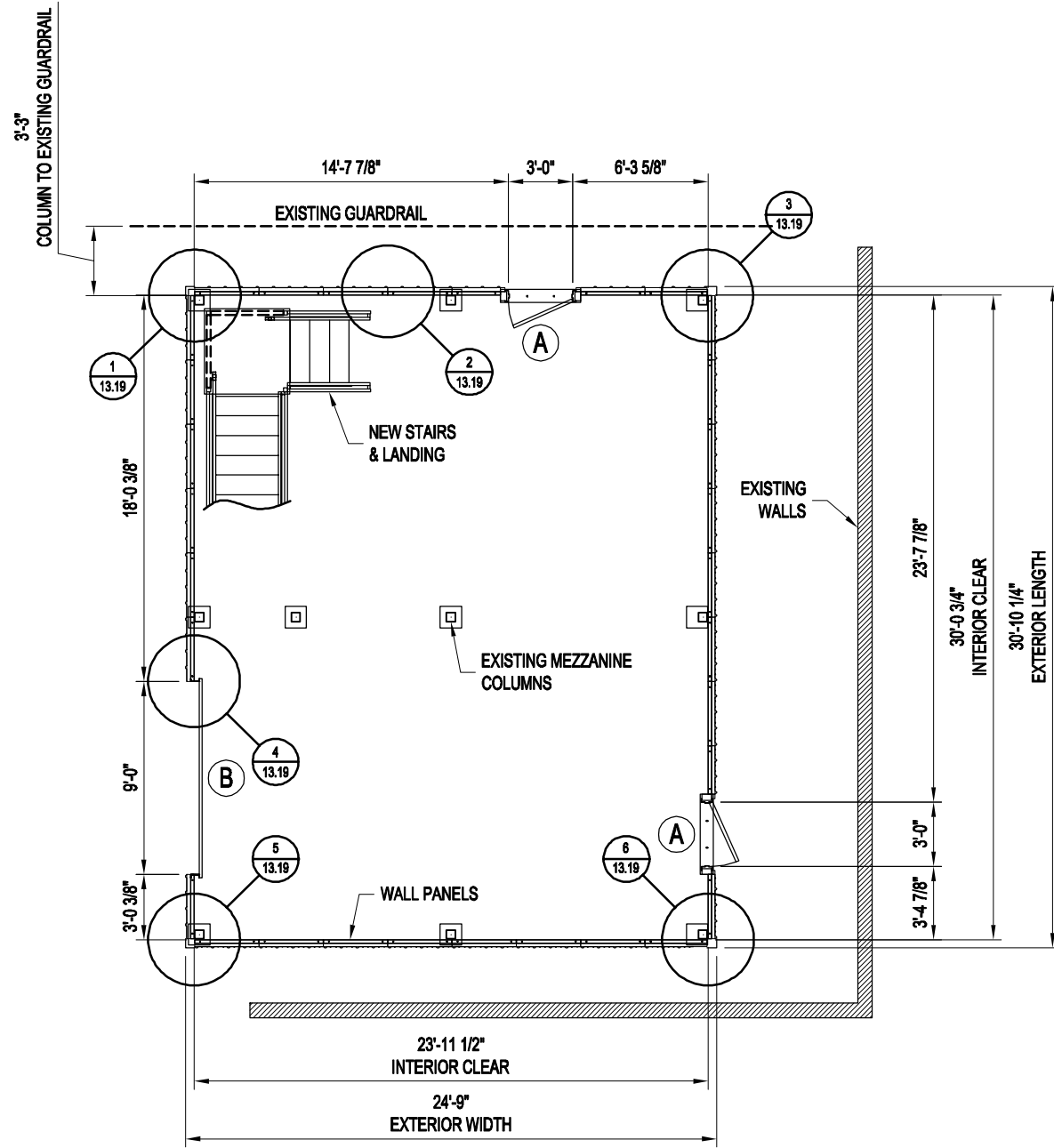
UPPER LEVEL LAYOUT PLAN VIEW

STEP #1 - MARKER POINTS
 USING THE DIMENSIONS AS SHOWN, MARK THE FOUR INSIDE BUILDING CORNER DIMENSIONS.

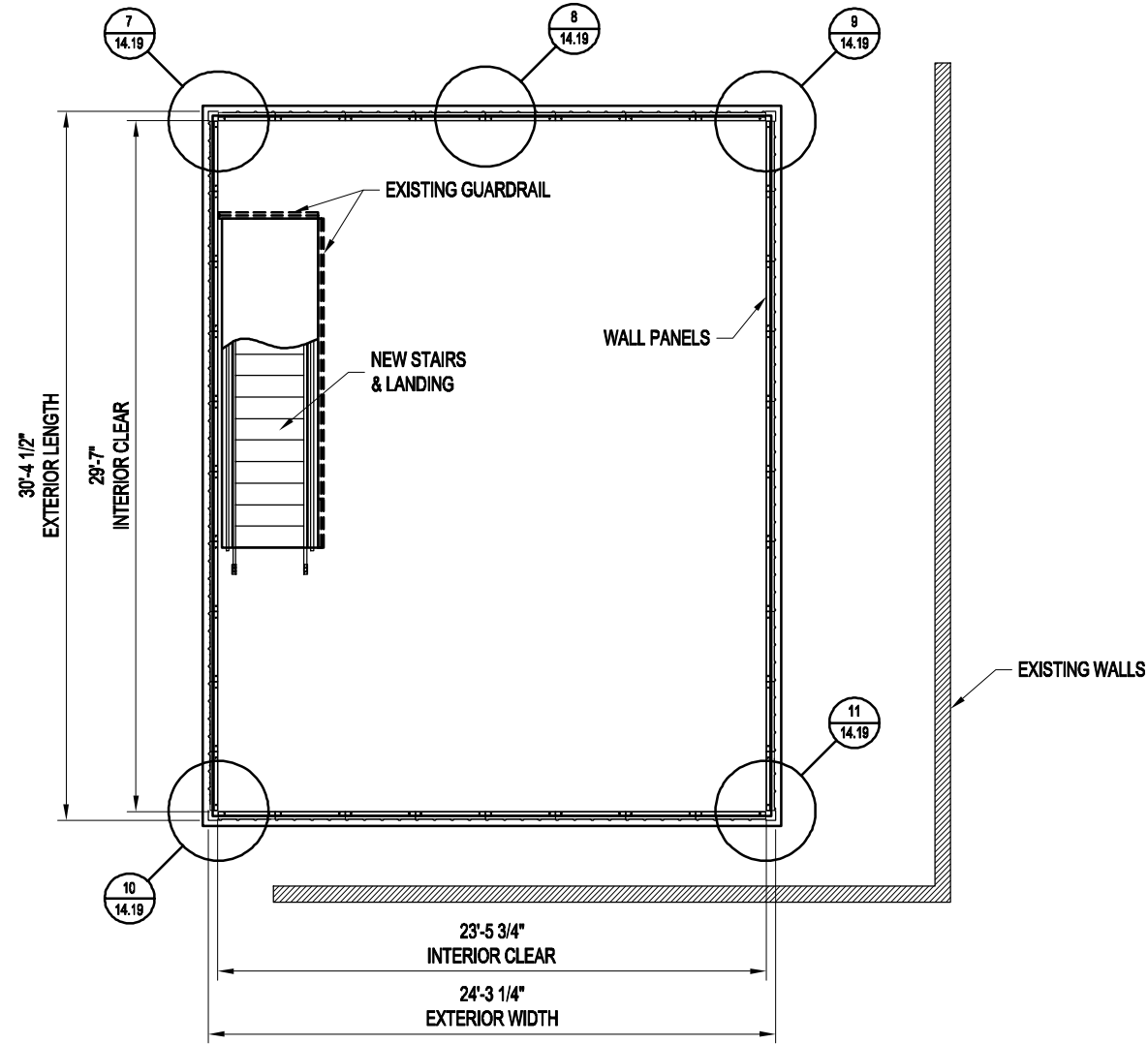
STEP #2 - DIAGONAL MEASUREMENT
 MEASURE THE DIAGONALS (DIAGONAL MEASUREMENTS MUST BE EQUAL), CORRECT IF NECESSARY BY SHIFTING THE CORNERS WITHOUT CHANGING THE LENGTH OR WIDTH DIMENSIONS.

STEP #3 - CHALK LINE
 USING THE SQUARED MARKER POINTS, SNAP A CHALK LINE AS SHOWN. (THE CHALK LINE SIGNIFIES THE INSIDE BUILDING DIMENSIONS)

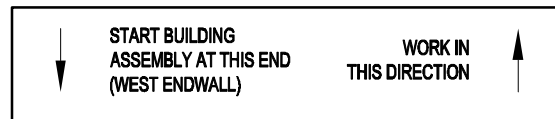
DRAWN BY: APC	DATE: 10/1/14	APPROVED BY: E. STEWART	DATE: 1/29/15	REVISION: 00	DATE: 2/19/15	SCALE: 3/16" = 1'-0"	K.K. QUOTE NUMBER: 14022DW1R2	PROJECT TITLE: MEZZANINE ENCLOSURE DC COOK NUCLEAR BRIDGMAN, MI 49106	BUYER: INDIANA MICHIGAN POWER CO. K.K. ORDER NUMBER: 9369	BUYER P.O. NUMBER: 01570393	PAGE TITLE: UPPER LEVEL LAYOUT PLAN VIEW SHEET 11 OF 19	Mfr. by Kelly Group, Inc. P.O. Box 1058 Fremont, NE 68026 Phone: 800-228-7230 Fax: 402-727-1363 Web: www.kellyklosure.com	



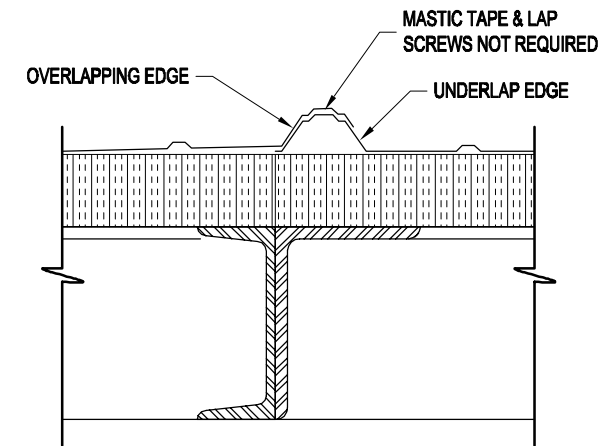
LOWER LEVEL PLAN VIEW



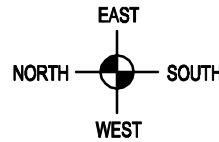
UPPER LEVEL PLAN VIEW



DOOR SCHEDULE	
MARK NO.	DESCRIPTION
(A)	3'-0\"/>
(B)	9\"/>



OVERLAP DETAIL



Mfr. by Kelly Group, Inc.
 P.O. Box 1058
 Fremont, NE 68026
 Phone: 800-228-7230
 Fax: 402-727-1363
 Web: www.kellyklosure.com

PLAN VIEWS

SHEET 12 OF 19

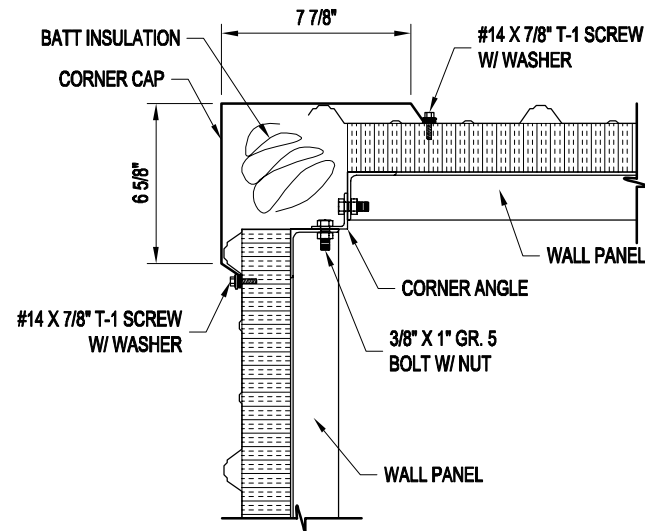
PAGE TITLE:

PROPRIETARY INFORMATION
 THE DRAWING AND THE DESIGN COVERS ARE THE EXCLUSIVE PROPERTY OF KELLY GROUP, INC. NO PART OF THIS DRAWING IS TO BE REPRODUCED, COPIED, LOANED, EXHIBITED, CHANGED OR OTHERWISE USED EXCEPT IN THE LIMITED MANNER AUTHORIZED BY KELLY GROUP, INC. IN WRITING. KELLY GROUP, INC. WILL NOT BE RESPONSIBLE FOR DAMAGES OF ANY KIND, INCLUDING CONSEQUENTIAL DAMAGES, OF ANY KIND, ARISING FROM THE USE OF THIS DRAWING.

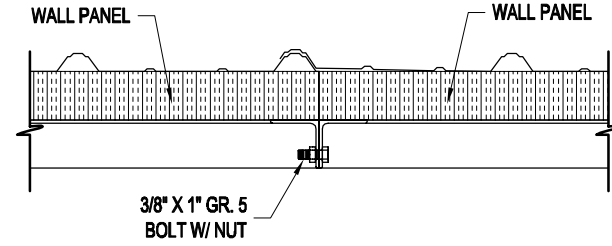
PROJECT TITLE:
**MEZANINE ENCLOSURE
 DC COOK NUCLEAR
 BRIDGMAN, MI 49106**

BUYER:
INDIANA MICHIGAN POWER CO.
 BUYER P.O. NUMBER:
01570393

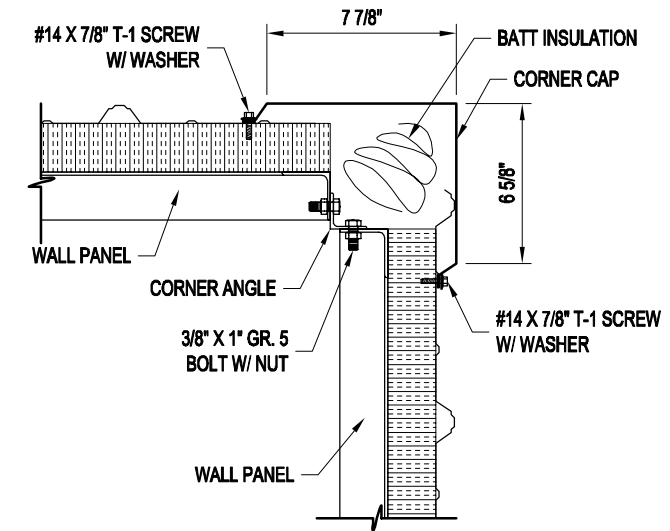
DRAWN BY:
APC
 DATE:
10/1/14
 APPROVED BY:
E. STEWART
 DATE:
1/29/15
 REVISION:
00
 DATE:
2/19/15
 SCALE:
1/8" = 1'-0"
 K.K. QUOTE NUMBER:
14022DW1R2



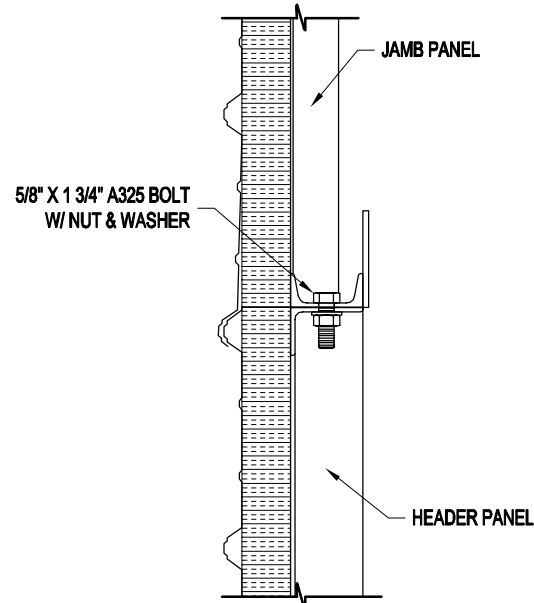
1
12.19 NORTHEAST CORNER CONNECTION DETAIL
SCALE: 1 1/2" = 1'-0"



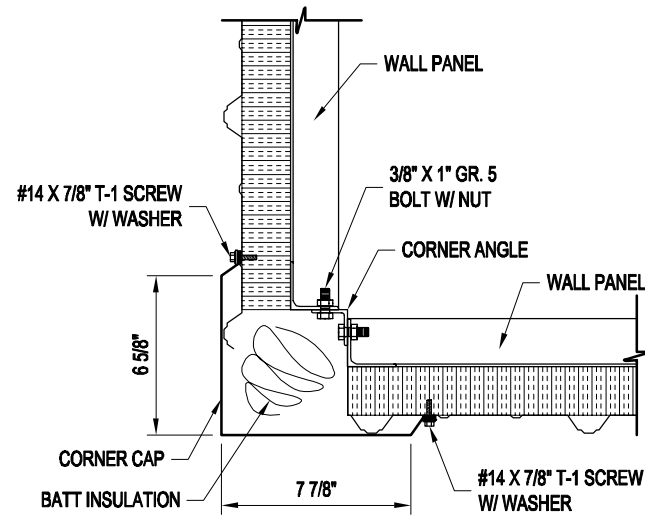
2
12.19 TYPICAL PANEL CONNECTION DETAIL
SCALE: 1 1/2" = 1'-0"



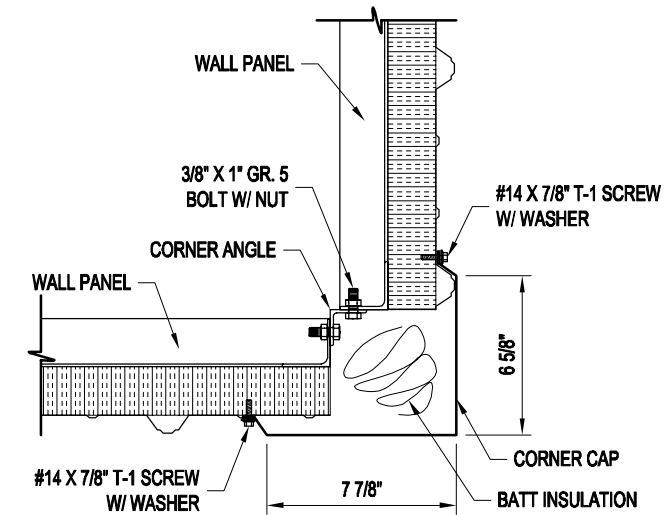
3
12.19 SOUTHEAST CORNER CONNECTION DETAIL
SCALE: 1 1/2" = 1'-0"



4
12.19 HEADER TO JAMB CONNECTION DETAIL
SCALE: 1 1/2" = 1'-0"



5
12.19 NORTHWEST CORNER CONNECTION DETAIL
SCALE: 1 1/2" = 1'-0"



6
12.19 SOUTHWEST CORNER CONNECTION DETAIL
SCALE: 1 1/2" = 1'-0"

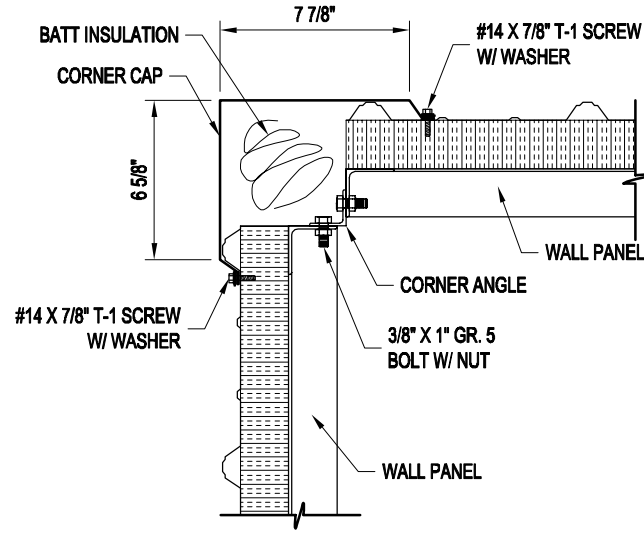


Mfr. by Kelly Group, Inc.
P.O. Box 1058
Fremont, NE 68026
Phone: 800-228-7230
Fax: 402-727-1363
Web: www.kellyklosure.com

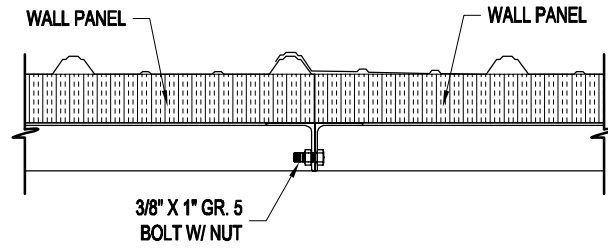
PAGE TITLE:
**LOWER LEVEL
PLAN VIEW DETAILS**
SHEET 13 OF 19
PROPRIETARY INFORMATION
THE DRAWINGS AND DESIGN COVERS ARE THE EXCLUSIVE PROPERTY OF KELLY GROUP, INC. NO PART OF THIS DRAWING IS TO BE REPRODUCED, COPIED, LOANED, EXHIBITED, CHANGED OR OTHERWISE USED EXCEPT IN THE LIMITED MANNER AND UNDER THE SUPERVISION AND CONTROL OF KELLY GROUP, INC. WITHOUT THE WRITTEN PERMISSION OF KELLY GROUP, INC.

PROJECT TITLE:
**MEZANINE ENCLOSURE
DC COOK NUCLEAR
BRIDGMAN, MI 49106**
BUYER:
INDIANA MICHIGAN POWER CO.
BUYER P.O. NUMBER:
01570393

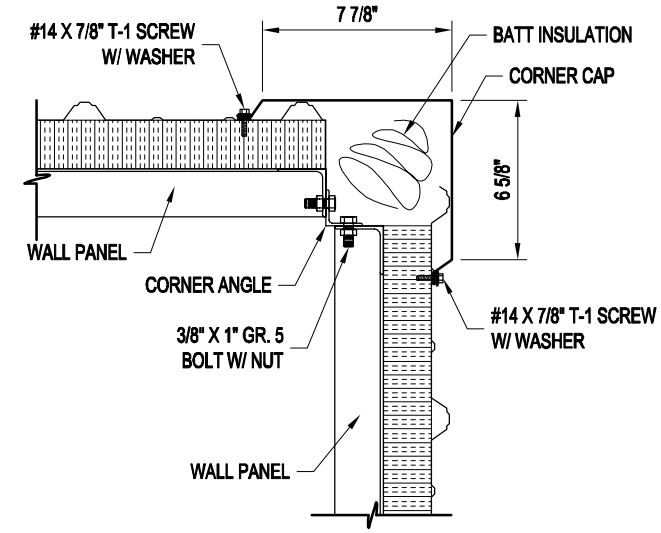
DRAWN BY:
APC
DATE:
10/1/14
APPROVED BY:
E. STEWART
DATE:
1/29/15
REVISION:
00
DATE:
2/19/15
SCALE:
1 1/2" = 1'-0"
K.K. QUOTE NUMBER:
14029DW1R2



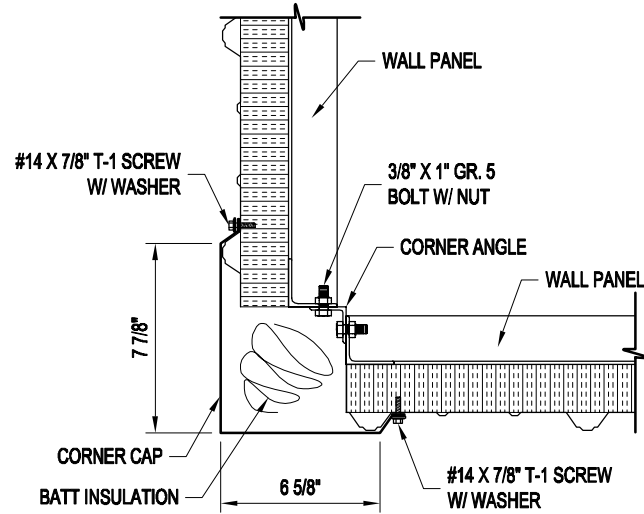
7 NORTHEAST CORNER CONNECTION DETAIL
12.19 SCALE: 1 1/2" = 1'-0"



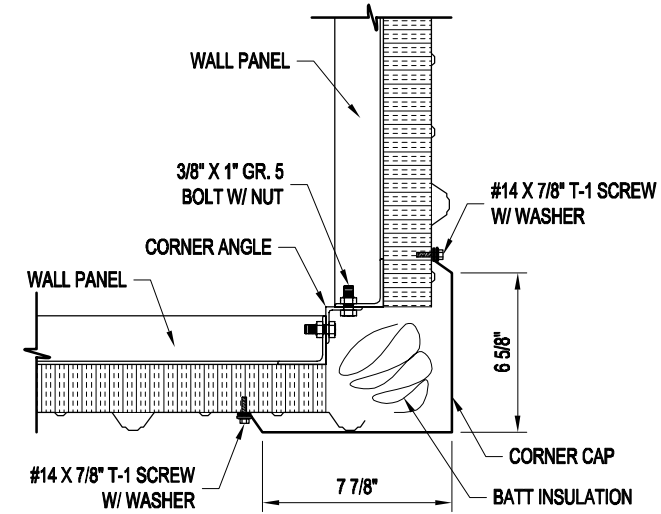
8 TYPICAL PANEL CONNECTION DETAIL
12.19 SCALE: 1 1/2" = 1'-0"



9 SOUTHEAST CORNER CONNECTION DETAIL
12.19 SCALE: 1 1/2" = 1'-0"



10 NORTHWEST CORNER CONNECTION DETAIL
12.19 SCALE: 1 1/2" = 1'-0"



11 SOUTHWEST CORNER CONNECTION DETAIL
12.19 SCALE: 1 1/2" = 1'-0"



Mfr. by Kelly Group, Inc.
P.O. Box 1058
Fremont, NE 68026
Phone: 800-228-7230
Fax: 402-727-1363
Web: www.kellyklosure.com

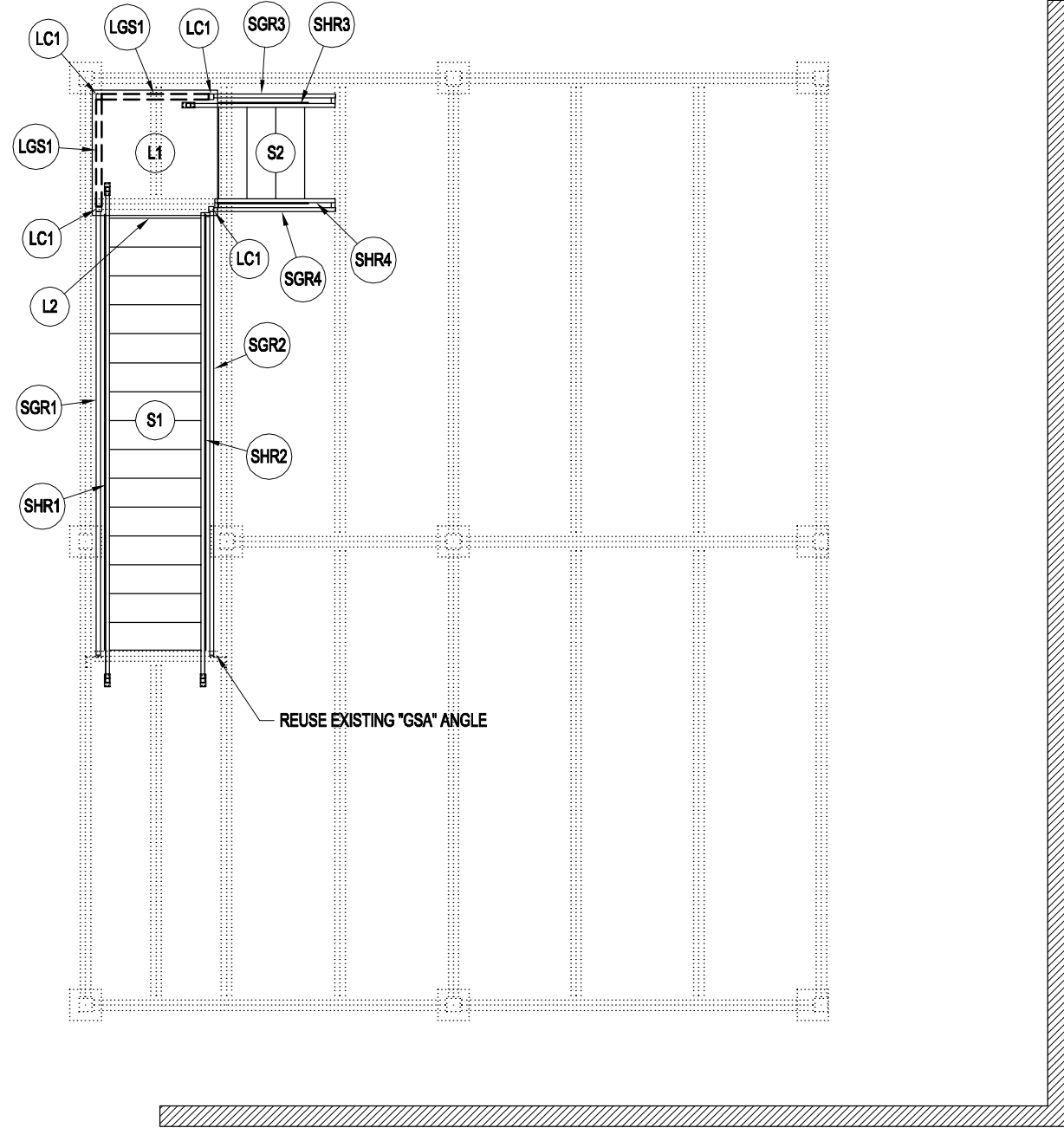
PAGE TITLE:
UPPER LEVEL
PLAN VIEW DETAILS
SHEET 14 OF 19

PROPRIETARY INFORMATION
THIS DRAWING AND THE DESIGN COVERS ARE THE EXCLUSIVE PROPERTY OF KELLY GROUP, INC. NO PART OF THIS DRAWING IS TO BE REPRODUCED, COPIED, LOANED, EXHIBITED, CHANGED OR OTHERWISE USED EXCEPT IN THE LIMITED MANNER AUTHORIZED BY KELLY GROUP, INC. IN WRITING. ANY VIOLATION OF THESE TERMS SHALL BE SUBJECT TO LITIGATION.

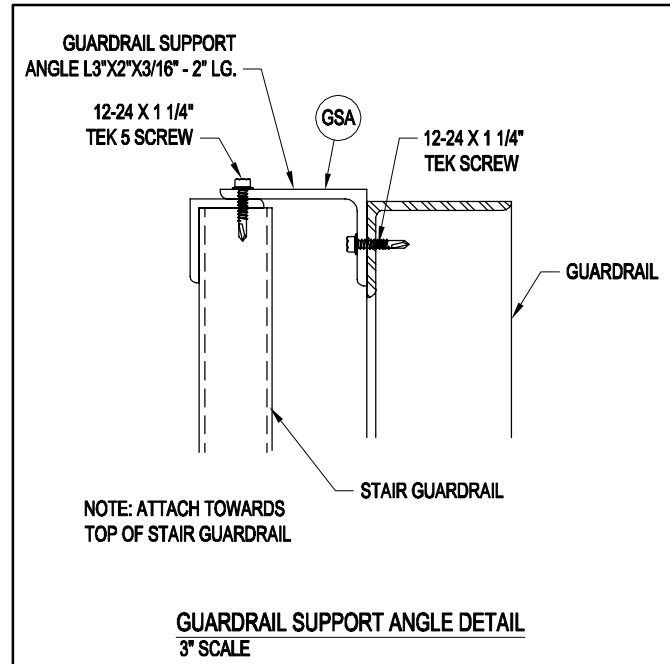
PROJECT TITLE:
MEZANINE ENCLOSURE
DC COOK NUCLEAR
BRIDGMAN, MI 49106

BUYER:
INDIANA MICHIGAN POWER CO.
K.K. ORDER NUMBER:
9369
BUYER P.O. NUMBER:
01570393

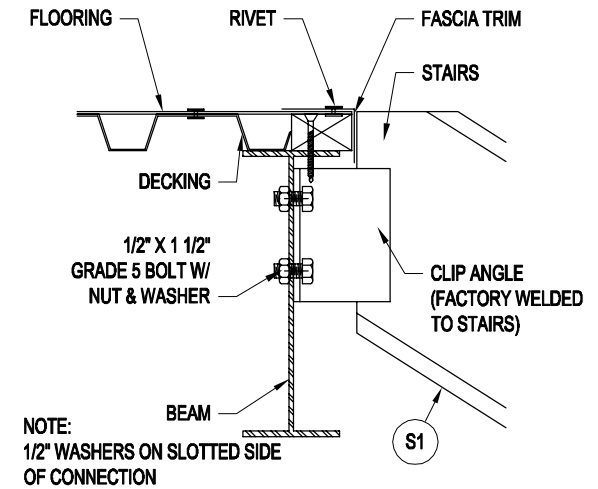
DRAWN BY:
APC
DATE:
10/1/14
APPROVED BY:
E. STEWART
DATE:
1/29/15
REVISION:
00
DATE:
2/19/15
SCALE:
1 1/2" = 1'-0"
K.K. QUOTE NUMBER:
14022DW1R2



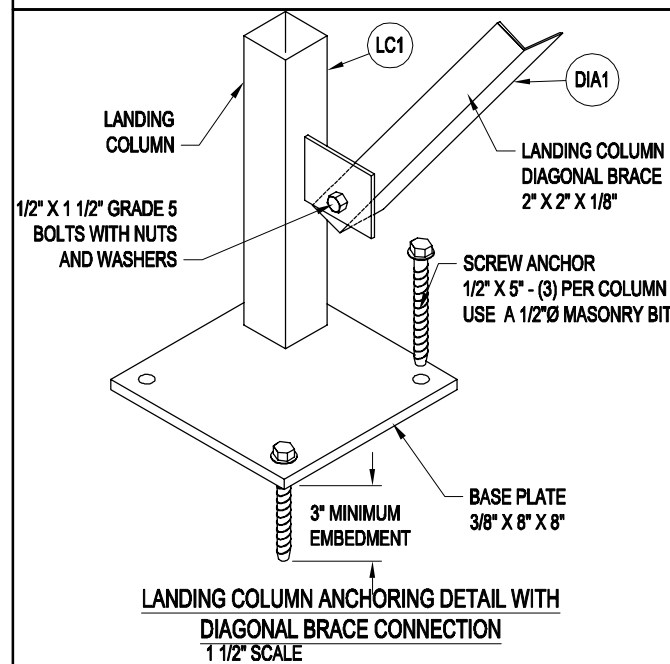
STAIR ITEM NUMBER PLAN VIEW



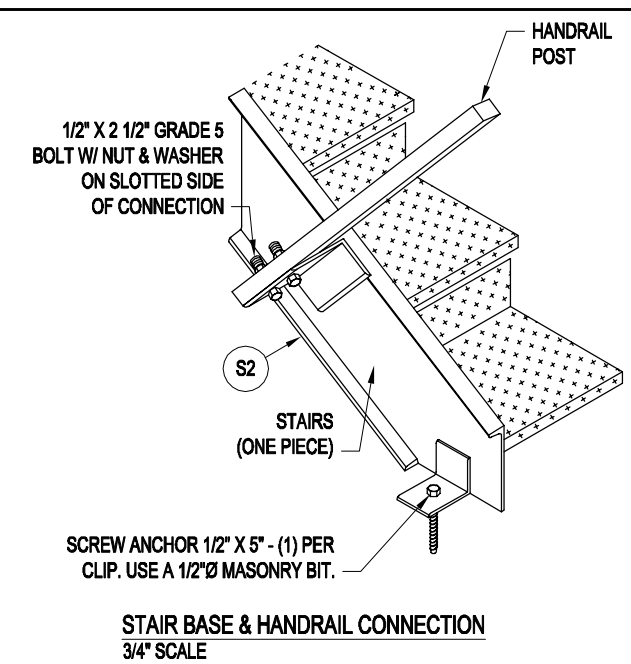
GUARDRAIL SUPPORT ANGLE DETAIL
3" SCALE



STAIR / BEAM CONNECTION
1 1/2" SCALE



LANDING COLUMN ANCHORING DETAIL WITH
DIAGONAL BRACE CONNECTION
1 1/2" SCALE



STAIR BASE & HANDRAIL CONNECTION
3/4" SCALE

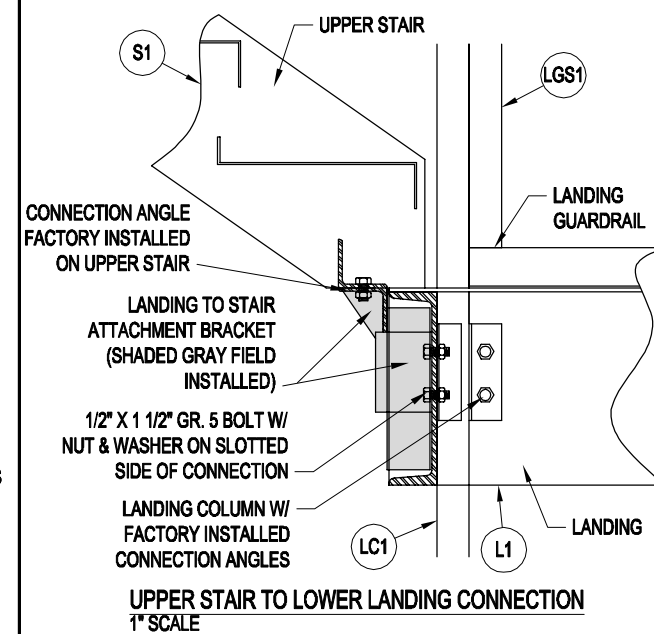
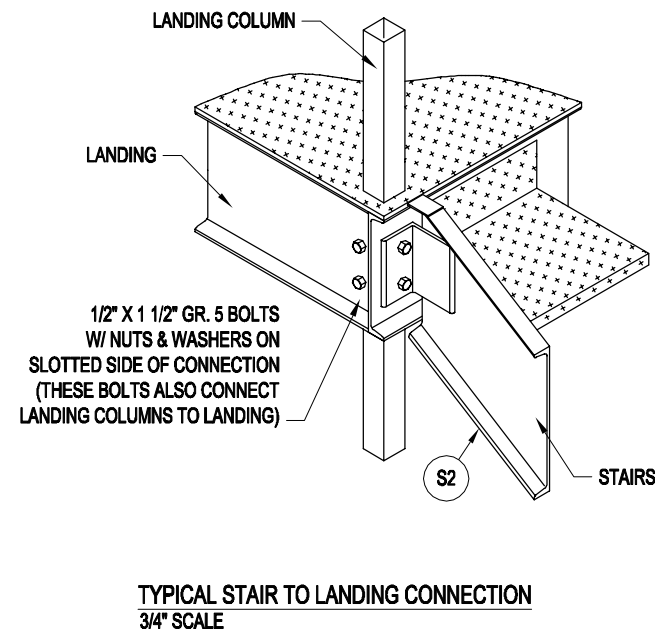
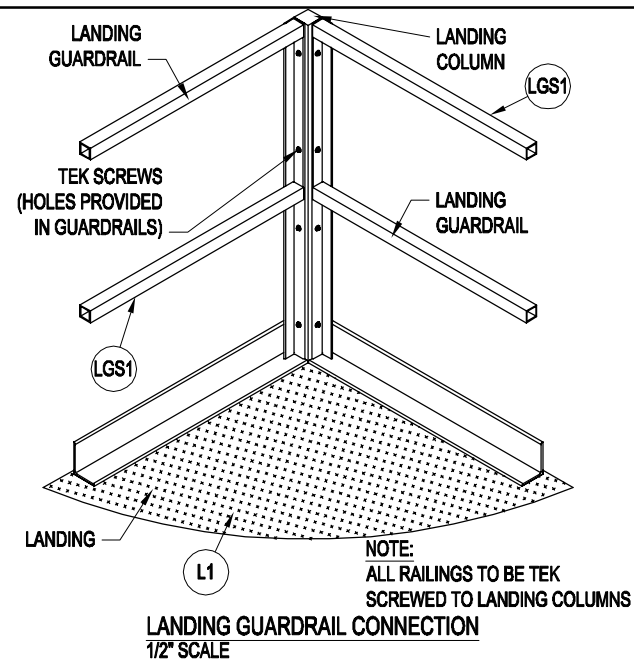
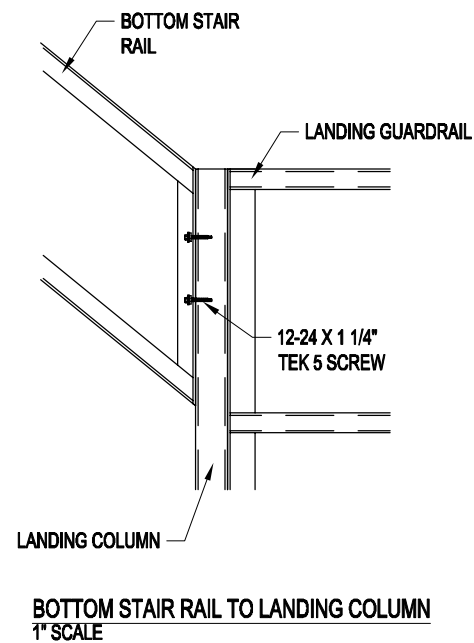
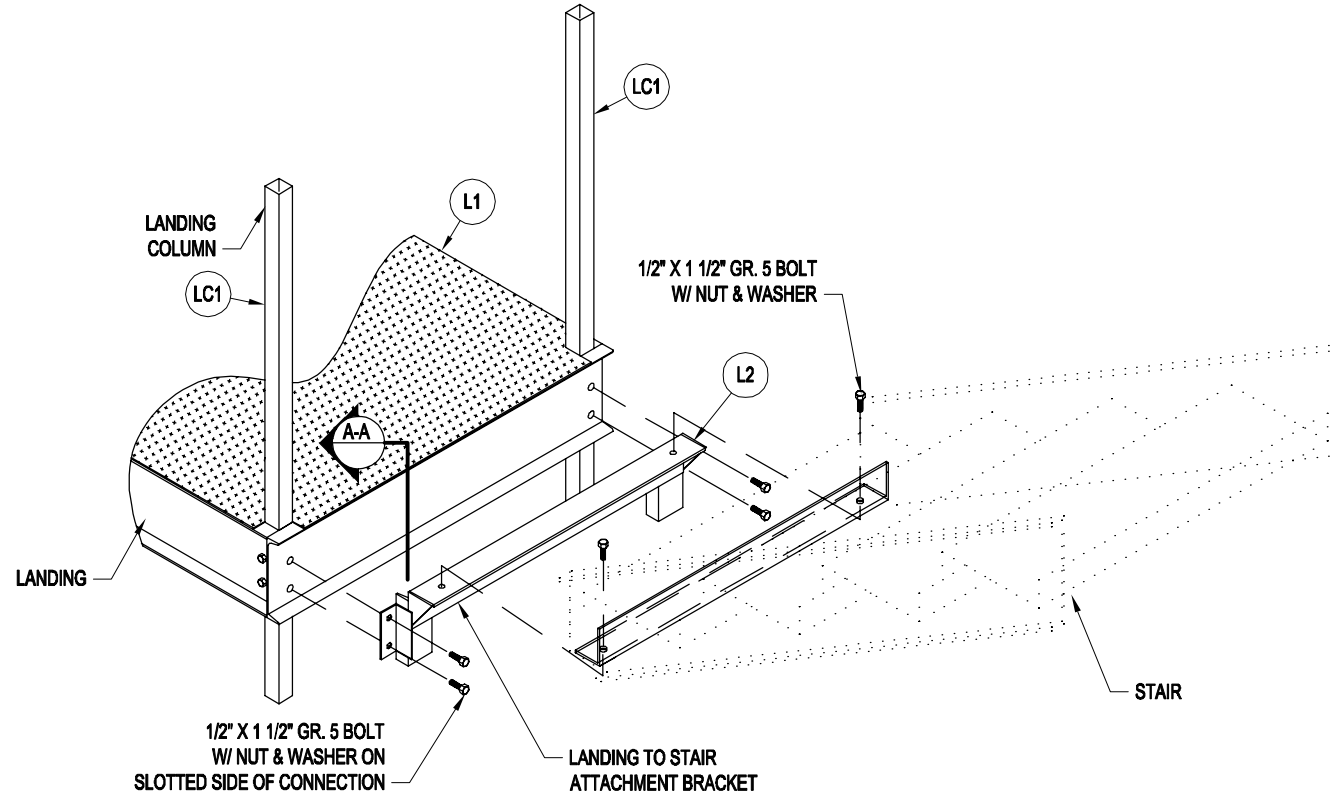
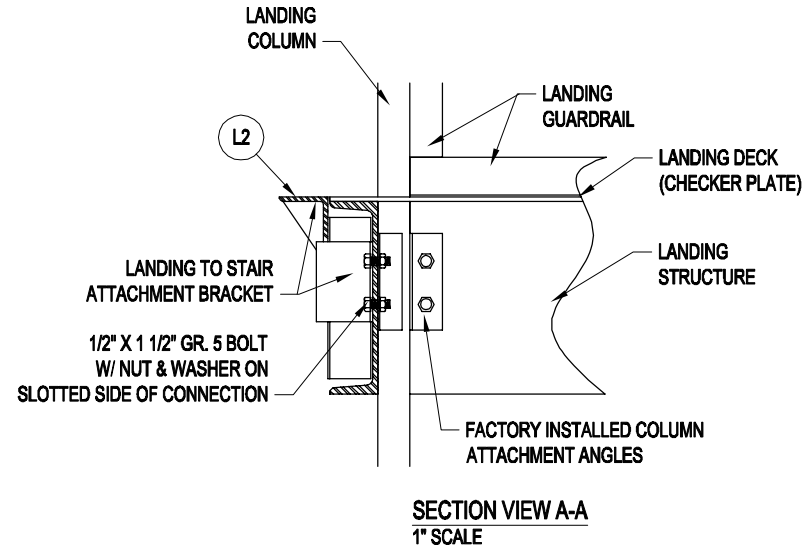


Mfr. by Kelly Group, Inc.
 P.O. Box 1058
 Fremont, NE 68026
 Phone: 800-228-7230
 Fax: 402-727-1363
 Web: www.kellyklosure.com

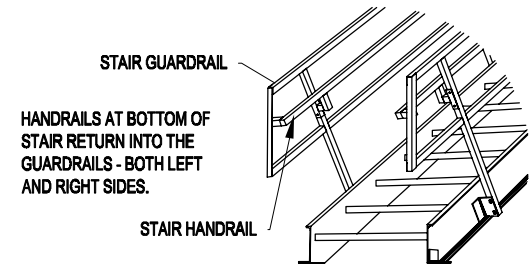
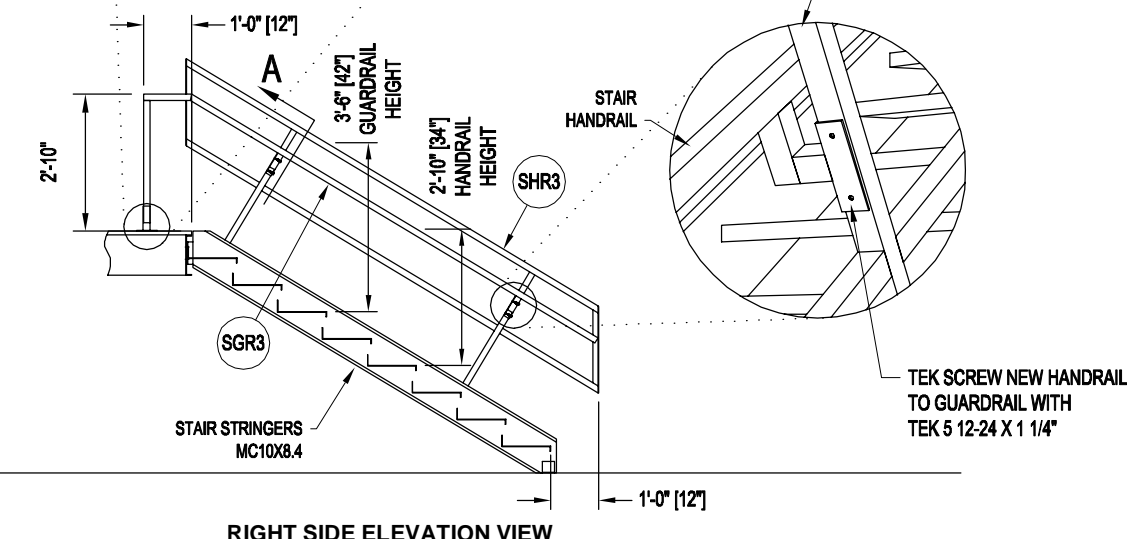
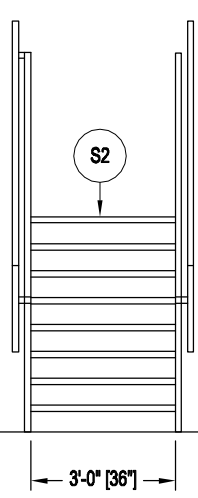
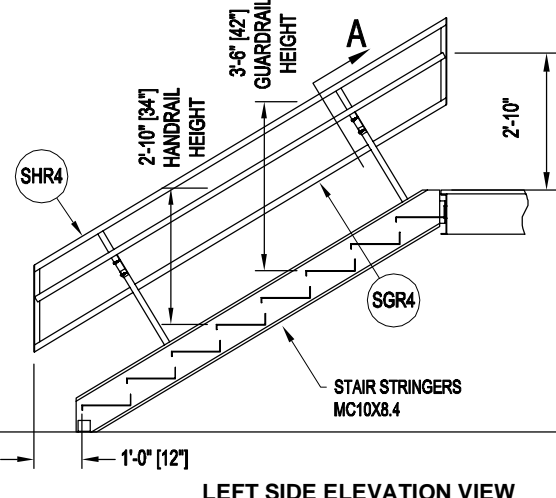
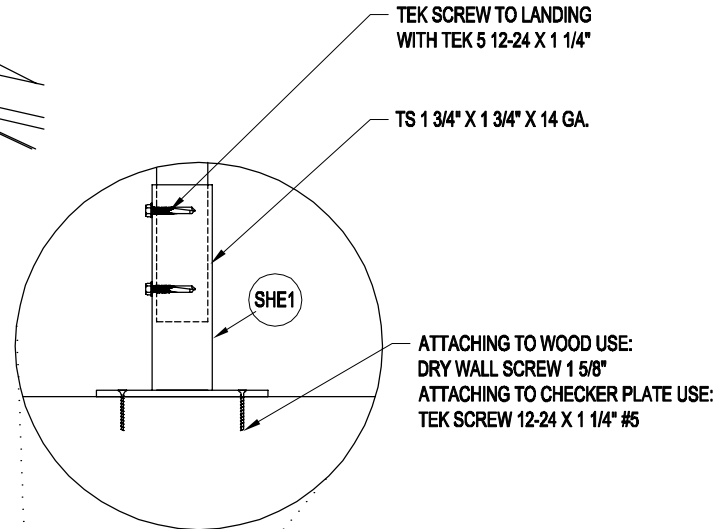
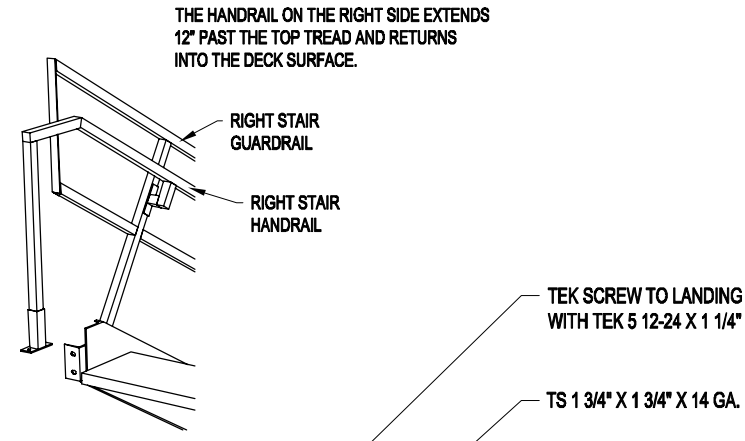
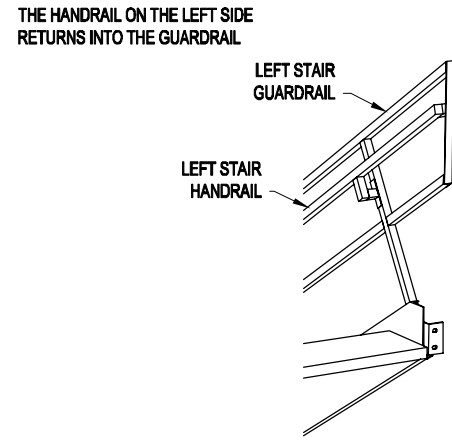
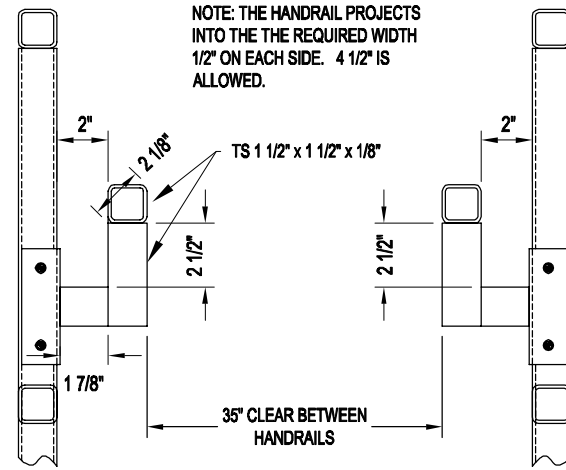
PROJECT TITLE: MEZANINE ENCLOSURE
 DC COOK NUCLEAR
 BRIDGMAN, MI 49106
 BUYER: INDIANA MICHIGAN POWER CO.
 BUYER P.O. NUMBER: 01570393
 K.K. ORDER NUMBER: 9369
 SCALE: 3/16" = 1'-0"
 K.K. QUOTE NUMBER: 140282DW1R2

PAGE TITLE: STAIR ITEM NUMBER
 PLAN VIEW
 SHEET 16 OF 19
 PROPRIETARY INFORMATION
 THE DRAWING AND THE DESIGN COVERS ARE THE EXCLUSIVE PROPERTY OF KELLY GROUP, INC. ANY REPRODUCTION, COPIED, LOANED, EXHIBITED, CHANGED OR OTHERWISE USED EXCEPT IN THE LIMITED MANNER AUTHORIZED BY KELLY GROUP, INC. WITHOUT THE WRITTEN PERMISSION OF KELLY GROUP, INC. IS STRICTLY PROHIBITED.

DRAWN BY: APC
 DATE: 10/1/14
 APPROVED BY: E. STEWART
 DATE: 1/29/15
 REVISION: 00
 DATE: 2/19/15
 SCALE: 3/16" = 1'-0"
 K.K. QUOTE NUMBER: 140282DW1R2




<p>Kelly Klosure TOUGH BY DESIGN. CUSTOM BY CHOICE.</p>	
<p>Mfr. by Kelly Group, Inc. P.O. Box 1058 Fremont, NE 68026 Phone: 800-228-7230 Fax: 402-727-1363 Web: www.kellyklosure.com</p>	
<p>PAGE TITLE: LANDING DETAILS</p>	<p>SHEET 17 OF 19</p>
<p>PROPRIETARY INFORMATION THIS DRAWING AND THE DESIGN COVERS ARE THE EXCLUSIVE PROPERTY OF KELLY GROUP, INC. ANY REPRODUCTION, COPIED, LOANED, REPRODUCED, CHANGED OR OTHERWISE USED WITHOUT THE LIMITED WRITTEN PERMISSION OF KELLY GROUP, INC. WILL BE CONSIDERED A VIOLATION OF INTELLECTUAL PROPERTY RIGHTS AND WILL BE PROSECUTED TO THE FULL EXTENT OF THE LAW.</p>	
<p>PROJECT TITLE: MEZANINE ENCLOSURE DC COOK NUCLEAR BRIDGMAN, MI 49106</p>	
<p>BUYER: INDIANA MICHIGAN POWER CO.</p>	<p>BUYER P.O. NUMBER: 01570393</p>
<p>BUYER ORDER NUMBER: 9369</p>	<p>SCALE: 1/2" = 1'-0"</p>
<p>DATE: 10/1/14</p>	<p>APPROVED BY: E. STEWART</p>
<p>DATE: 1/29/15</p>	<p>REVISION: 00</p>
<p>DATE: 2/19/15</p>	<p>K.K. QUOTE NUMBER: 14028DW1R2</p>



GUARDRAIL AND HANDRAIL FOR STAIR FROM SLAB ON GRADE TO 2'-3 1/2" LANDING LEVEL
1/4" SCALE

NOTE: THE TREADS SHOWN ARE FOR REFERENCE ONLY AND DO NOT NECESSARILY REPRESENT THE ACTUAL QUANTITY.



Kelly Klosure
TOUGH BY DESIGN. CUSTOM BY CHOICE.

Mfr. by Kelly Group, Inc.
P.O. Box 1058
Fremont, NE 68026
Phone: 800-228-7230
Fax: 402-727-1363
Web: www.kellyklosure.com

PAGE TITLE: LOWER STAIR SECTION
HANDRAIL & GUARDRAIL DETAILS
SHEET 18 OF 19

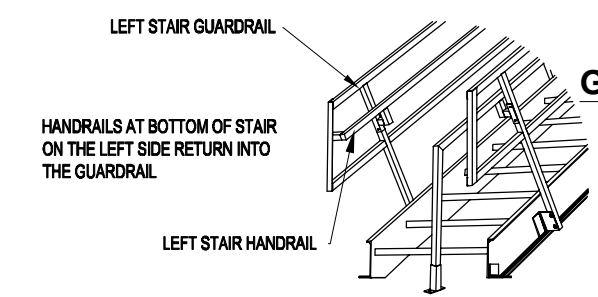
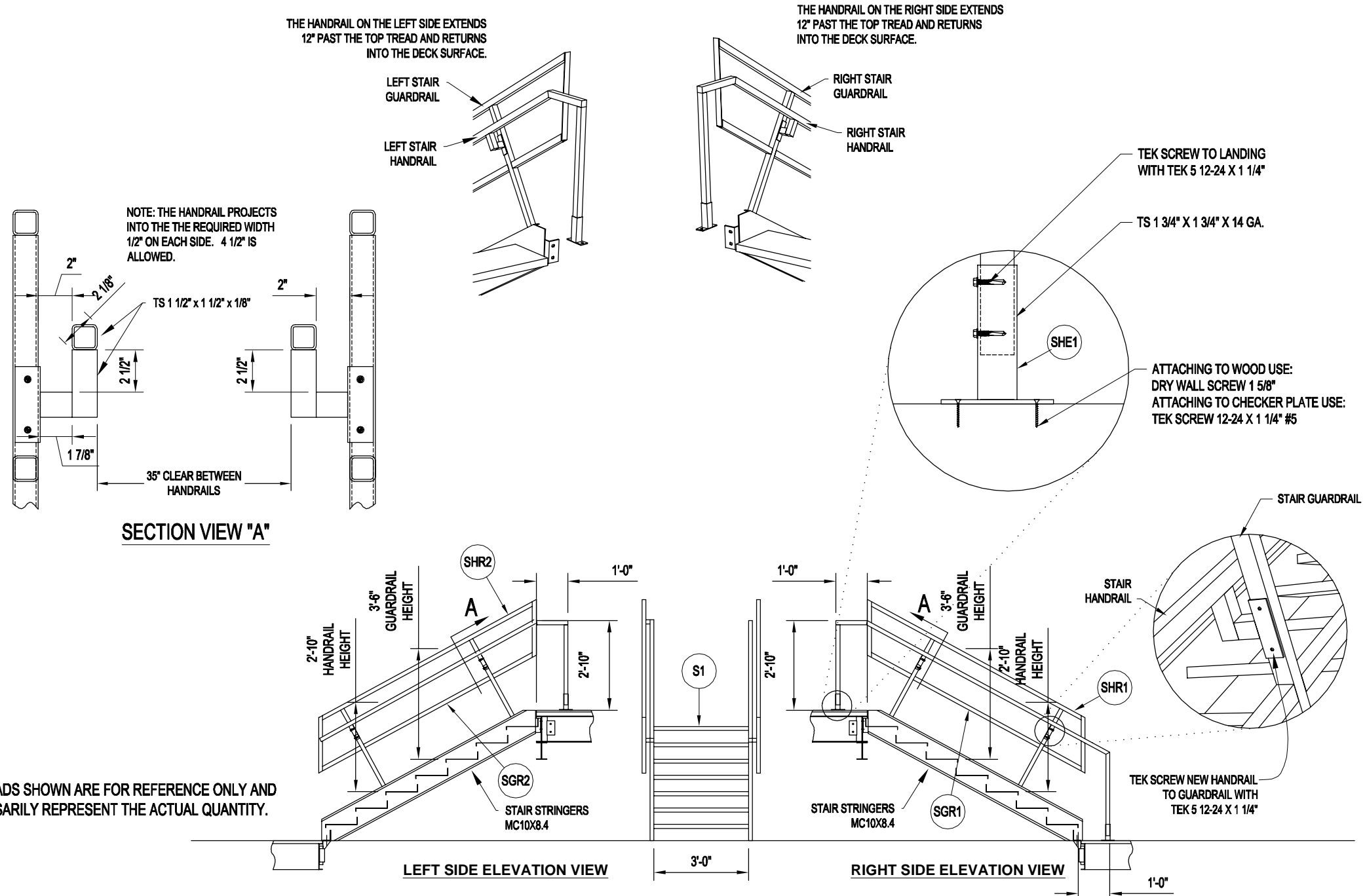
PROJECT TITLE: MEZANINE ENCLOSURE
DC COOK NUCLEAR
BRIDGMAN, MI 49106

BUYER: INDIANA MICHIGAN POWER CO.
K.K. ORDER NUMBER: 9369
BUYER P.O. NUMBER: 01570393

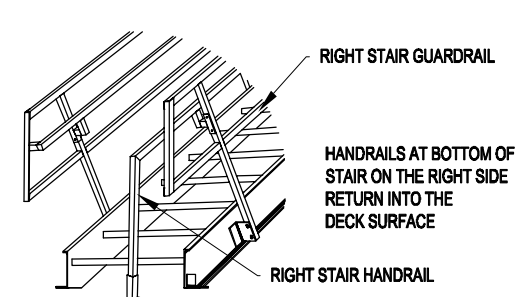
DRAWN BY: APC
DATE: 10/1/14
APPROVED BY: E. STEWART
DATE: 1/29/15
REVISION: 00
DATE: 2/19/15
SCALE: 1/4" = 1'-0"

K.K. QUOTE NUMBER: 140229W1R2

THE DRAWING AND DESIGN ARE THE EXCLUSIVE PROPERTY OF KELLY GROUP, INC. ANY REPRODUCTION, COPIED, LOANED, EXHIBITED, CHANGED OR OTHERWISE USED WITHOUT THE WRITTEN PERMISSION OF KELLY GROUP, INC. IS STRICTLY PROHIBITED. KELLY GROUP, INC. IS NOT RESPONSIBLE FOR DAMAGES OF ANY KIND.



GUARDRAIL AND HANDRAIL FOR STAIR FROM 2'-3 1/2" LANDING LEVEL TO 11'-5 1/2" TOP OF DECK
1/4" SCALE



Mfr. by Kelly Group, Inc.
P.O. Box 1058
Fremont, NE 68026
Phone: 800-228-7230
Fax: 402-727-1363
Web: www.kellyklosure.com

PAGE TITLE: UPPER STAIR SECTION
HANDRAIL & GUARDRAIL DETAILS
SHEET 19 OF 19

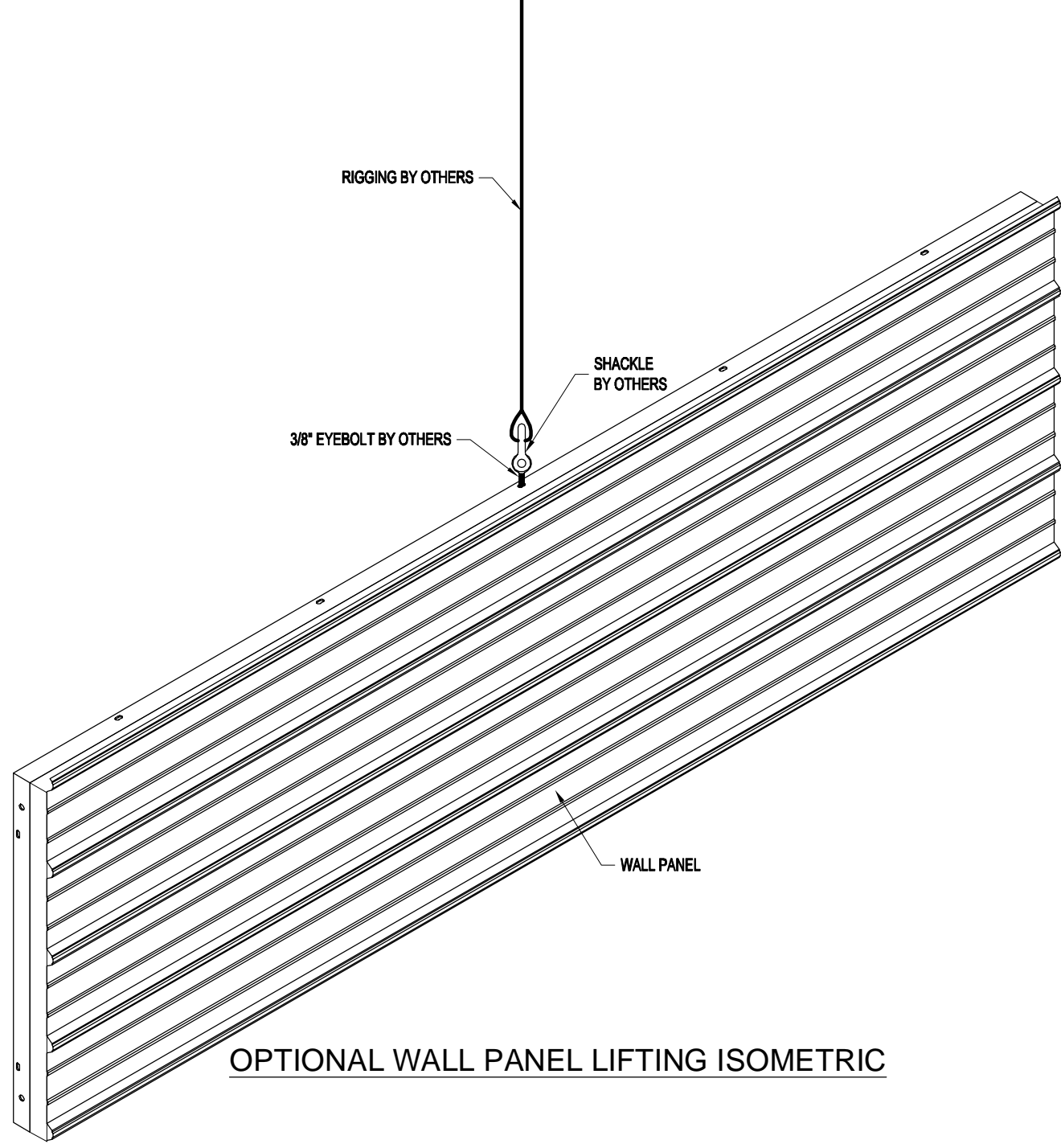
PROPRIETARY INFORMATION
THE DRAWING AND THE DESIGN COVERS ARE THE EXCLUSIVE PROPERTY OF KELLY GROUP, INC. ANY REPRODUCTION, COPIED, LOANED, EXHIBITED, CHANGED OR OTHERWISE USED EXCEPT IN THE LIMITED MANNER AUTHORIZED BY KELLY GROUP, INC. IS STRICTLY PROHIBITED. REVISIONS TO THIS DRAWING SHALL BE MADE BY KELLY GROUP, INC. ONLY.

PROJECT TITLE: MEZANINE ENCLOSURE
DC COOK NUCLEAR
BRIDGMAN, MI 49106

BUYER: INDIANA MICHIGAN POWER CO.
K.K. ORDER NUMBER: 9369
BUYER P.O. NUMBER: 01570393

DRAWN BY: APC
DATE: 10/1/14
APPROVED BY: E. STEWART
DATE: 1/29/15
REVISION: 00
DATE: 2/19/15
SCALE: 1/4" = 1'-0"

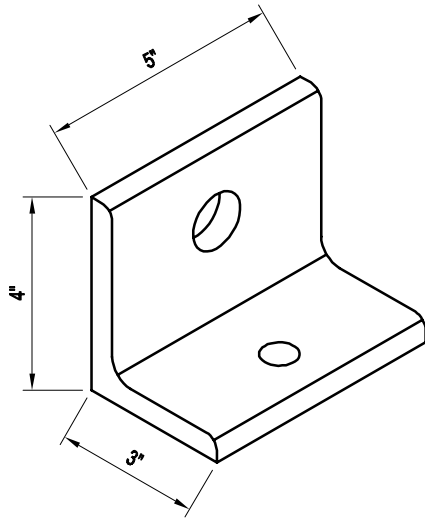
K.K. QUOTE NUMBER: 140229DW1R2



OPTIONAL WALL PANEL LIFTING ISOMETRIC

DRAWN BY: APC		PROJECT TITLE: MEZZANINE ENCLOSURE DC COOK NUCLEAR BRIDGMAN, MI 49106		PAGE TITLE: OPTIONAL WALL PANEL LIFTING ISOMETRIC		Mfr. by Kelly Group, Inc. P.O. Box 1058 Fremont, NE 68026	
DATE: 10/1/14		BUYER: INDIANA MICHIGAN POWER CO.		SHEET SS-1 OF SS-5		Phone: 800-228-7230 Fax: 402-727-1363 Web: www.kellyklosure.com	
APPROVED BY: E. STEWART		K.K. ORDER NUMBER: 9369		PROPRIETARY INFORMATION		THE DRAWINGS AND DESIGN COVERS ARE THE EXCLUSIVE PROPERTY OF KELLY GROUP, INC. NO PART OF THIS DRAWING IS TO BE REPRODUCED, COPIED, LOANED, EXHIBITED, CHANGED OR OTHERWISE USED EXCEPT IN THE LIMITED MANNER AUTHORIZED BY KELLY GROUP, INC. WITHOUT THE WRITTEN PERMISSION OF KELLY GROUP, INC.	
DATE: 1/29/15		BUYER P.O. NUMBER: 01570393		SCALE: NO SCALE		K.K. QUOTE NUMBER: 140229DW1R2	
REVISION: 00							
DATE: 2/19/15							

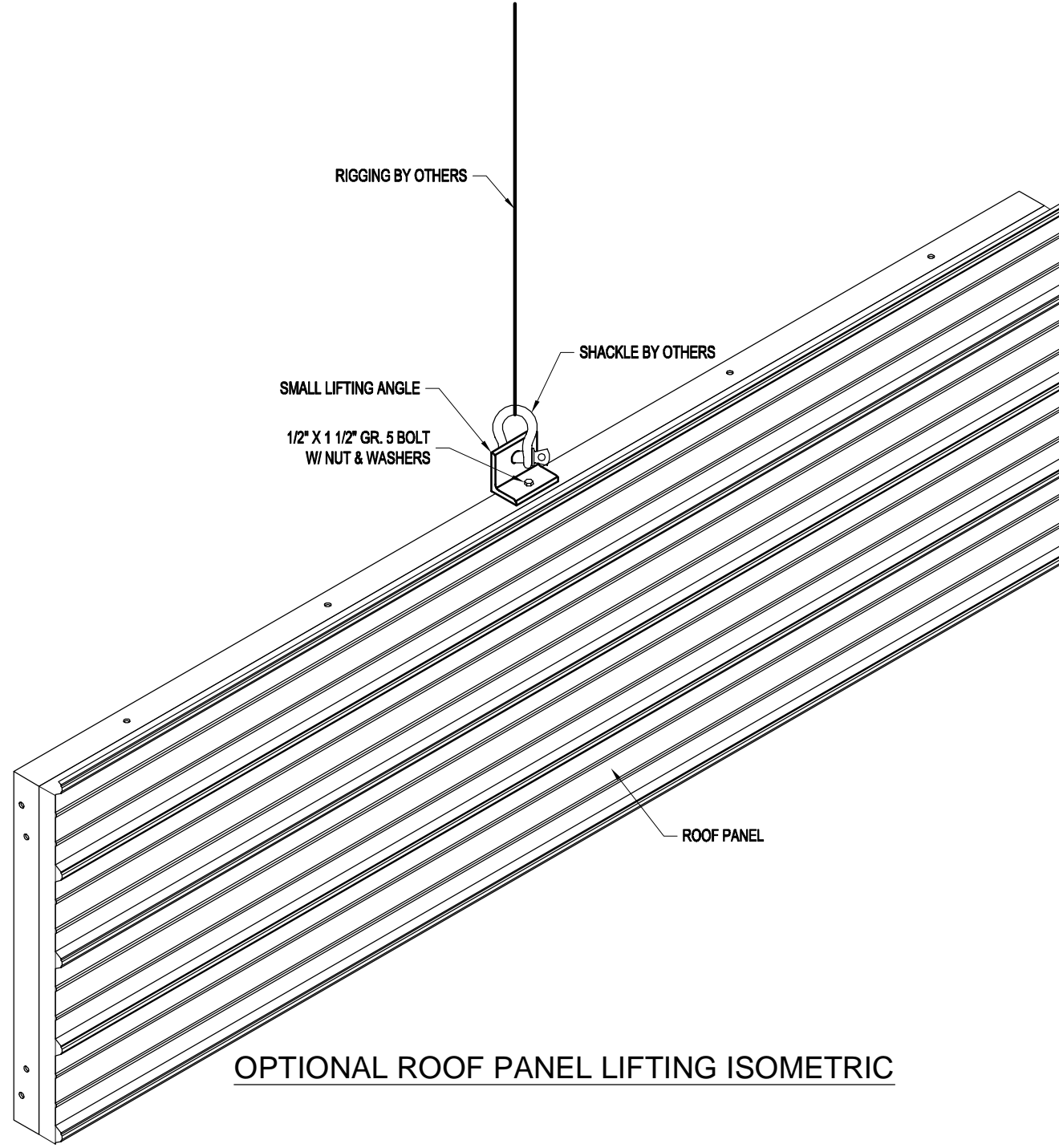




SMALL LIFTING ANGLE

MATERIAL: L4" X 3" X 1/2" A36 STEEL ANGLE

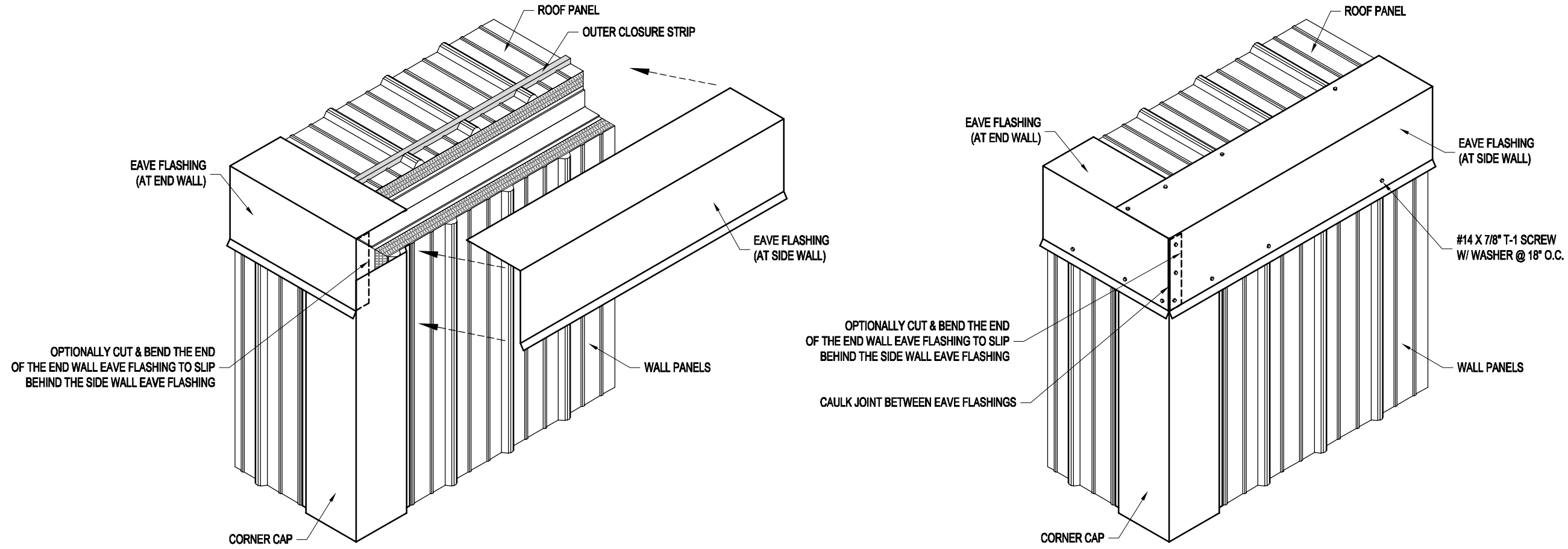
CAPACITY: 2,000 LBS WITH 1/2" GRADE 5 BOLT, NUT & WASHERS



OPTIONAL ROOF PANEL LIFTING ISOMETRIC

NOTE:
 KELLY KLOSURE HAS TEST REPORTS AND/OR STRUCTURAL CALCULATIONS ON FILE WHICH CAN BE SUBMITTED UPON REQUEST CERTIFYING THE ANGLE CAPACITY.

DRAWN BY: APC		PROJECT TITLE: MEZZANINE ENCLOSURE DC COOK NUCLEAR BRIDGMAN, MI 49106		PAGE TITLE: OPTIONAL ROOF PANEL LIFTING ISOMETRIC		Mfr. by Kelly Group, Inc. P.O. Box 1058 Fremont, NE 68026	
DATE: 10/1/14		BUYER: INDIANA MICHIGAN POWER CO.		SHEET SS-2 OF SS-5		Phone: 800-228-7230 Fax: 402-727-1363 Web: www.kellyklosure.com	
APPROVED BY: E. STEWART		BUYER P.O. NUMBER: 01570393		PROPRIETARY INFORMATION <small>THE DRAWINGS AND DESIGN COVERS ARE THE EXCLUSIVE PROPERTY OF KELLY GROUP, INC. ANY REPRODUCTION, COPIED, LOANED, REPRODUCED, CHANGED OR OTHERWISE USED WITHOUT THE WRITTEN PERMISSION OF KELLY GROUP, INC. IS STRICTLY PROHIBITED. © 2014 KELLY GROUP, INC.</small>		K.K. QUOTE NUMBER: 140828DW1R2	
REVISION: 00		K.K. ORDER NUMBER: 9369		SCALE: NO SCALE		K.K. QUOTE NUMBER: 140828DW1R2	
DATE: 2/19/15						Kelly Klosure Tough by Design. Custom by Choice.	



EAVE FLASHING INSTALLATION AT CORNER



Mfg. by Kelly Group, Inc.
 P.O. Box 1058
 Fremont, NE 68026
 Phone: 800-228-7230
 Fax: 402-727-1363
 Web: www.kellyklosure.com

PAGE TITLE:
**EAVE FLASHING INSTALLATION
 AT BUILDING CORNER**
 SHEET SS-3 OF SS-5

PROPRIETARY INFORMATION
 THE DRAWINGS AND DESIGN COVERS ARE THE EXCLUSIVE PROPERTY OF KELLY GROUP, INC. NO PART OF THIS DOCUMENT IS TO BE REPRODUCED, COPIED, LOANED, EXHIBITED, CHANGED OR OTHERWISE USED EXCEPT IN THE LIMITED MANNER AUTHORIZED BY KELLY GROUP, INC. WITHOUT THE WRITTEN PERMISSION OF KELLY GROUP, INC.

PROJECT TITLE:
**MEZZANINE ENCLOSURE
 DC COOK NUCLEAR
 BRIDGMAN, MI 49106**

BUYER:
INDIANA MICHIGAN POWER CO.

K.K. ORDER NUMBER: **9369**
 BUYER P.O. NUMBER: **01570393**

DRAWN BY:
APC

DATE: **10/1/14**

APPROVED BY: **E. STEWART**
 DATE: **1/29/15**

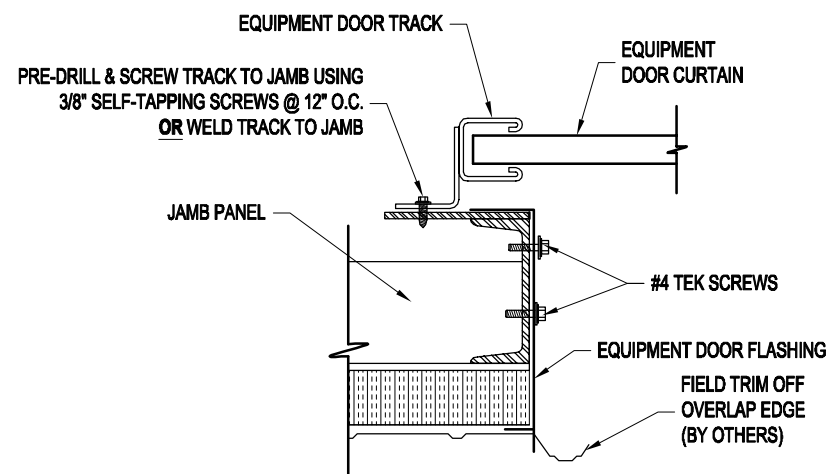
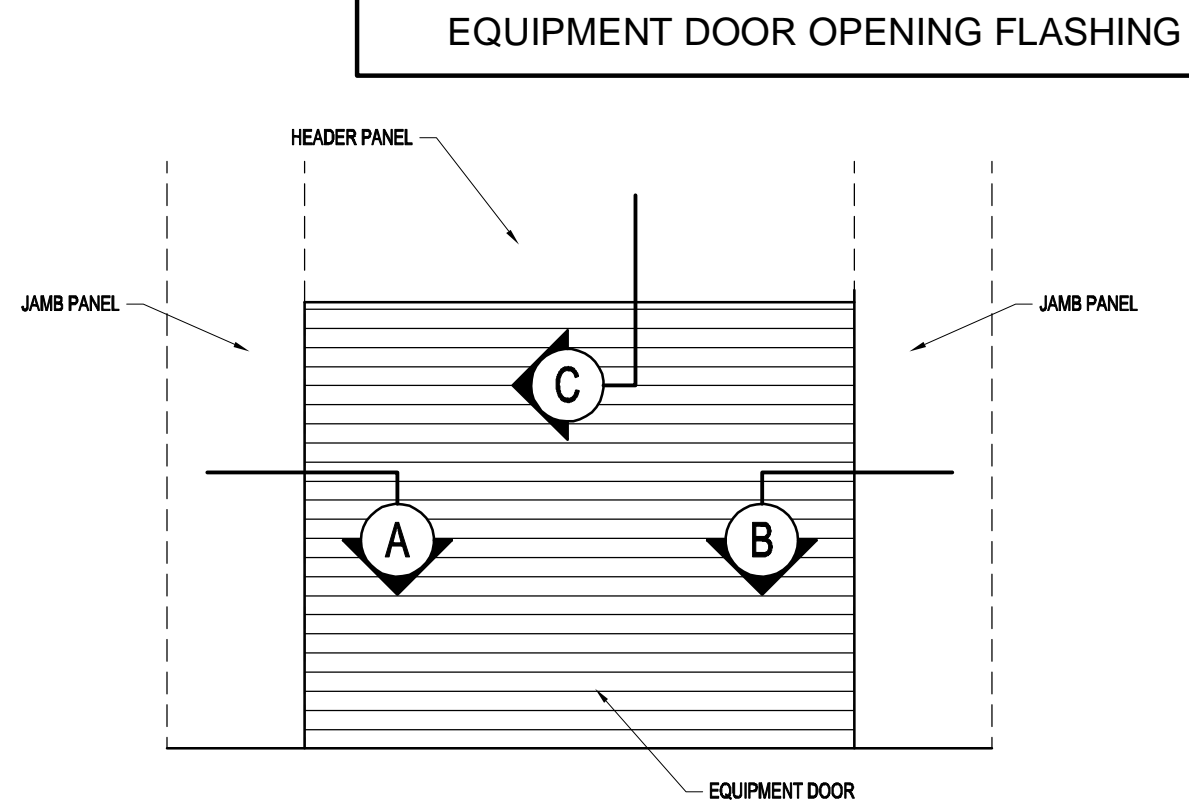
REVISION: **00**
 DATE: **2/19/15**

SCALE: **NO SCALE**

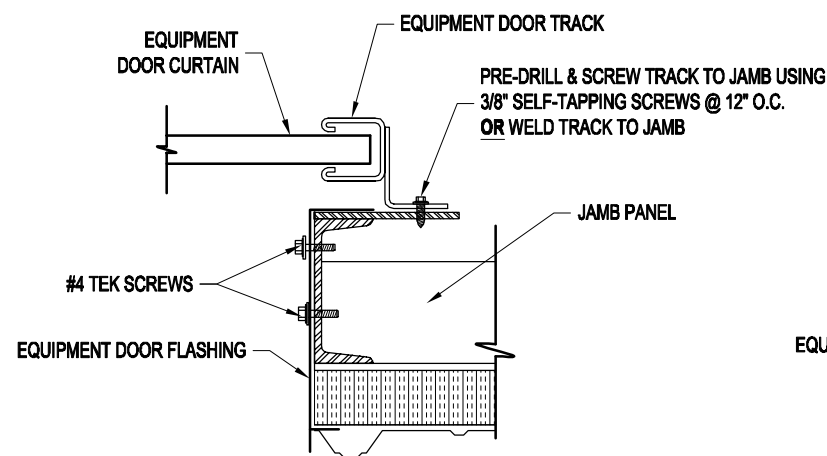
K.K. QUOTE NUMBER:
140828DW1R2

IMPORTANT NOTE:
OVERHEAD DOORS ARE SUPPLIED ONLY!
INSTALLATION & SERVICE IS BY OTHERS!
 (INSTRUCTIONS FOR OVERHEAD DOOR ARE INCLUDED WITH THE DOOR)

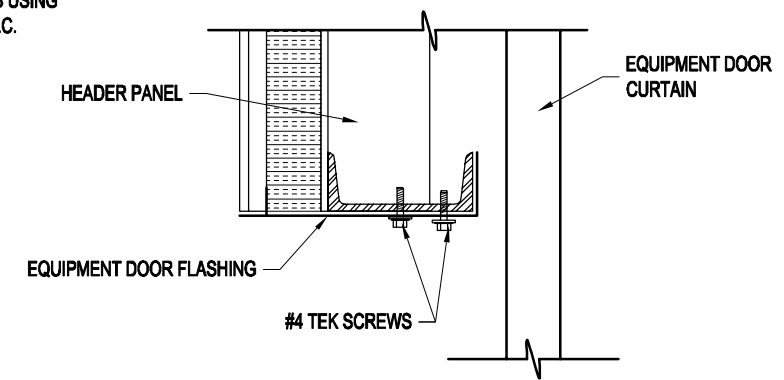
INSTALLATION NOTES:
 1. INSTALL EQUIPMENT DOOR TRIM BEFORE INSTALLING OVERHEAD DOOR.
 2. ALL WEATHER-STRIPPING AND BRUSHES TO BE INSTALLED PER DOOR MANUFACTURERS INSTRUCTIONS.



A SECTION AT LEFT JAMB PANEL



B SECTION AT RIGHT JAMB PANEL



C TYPICAL SECTION AT HEADER PANEL



Mfr. by Kelly Group, Inc.
 P.O. Box 1058
 Fremont, NE 68026
 Phone: 800-228-7230
 Fax: 402-727-1363
 Web: www.kellyklosure.com

PAGE TITLE:
**EQUIPMENT DOOR FLASHING
 INSTALLATION INSTRUCTIONS**

SHEET SS-4 OF SS-5

PROPRIETARY INFORMATION
 THE DRAWINGS AND DESIGN ARE THE EXCLUSIVE PROPERTY OF KELLY GROUP, INC. NO PART OF THIS DRAWING OR DESIGN IS TO BE REPRODUCED, COPIED, LOANED, EITHER WHOLLY OR PARTIALLY, OR OTHERWISE USED EXCEPT IN THE LIMITED MANNER AUTHORIZED BY KELLY GROUP, INC. WITHOUT THE WRITTEN PERMISSION OF KELLY GROUP, INC.

PROJECT TITLE:
**MEZANINE ENCLOSURE
 DC COOK NUCLEAR
 BRIDGMAN, MI 49106**

BUYER:
INDIANA MICHIGAN POWER CO.

K.K. ORDER NUMBER:
9369

BUYER P.O. NUMBER:
01570393

DRAWN BY:
APC

DATE:
10/1/14

APPROVED BY:
E. STEWART

DATE:
1/29/15

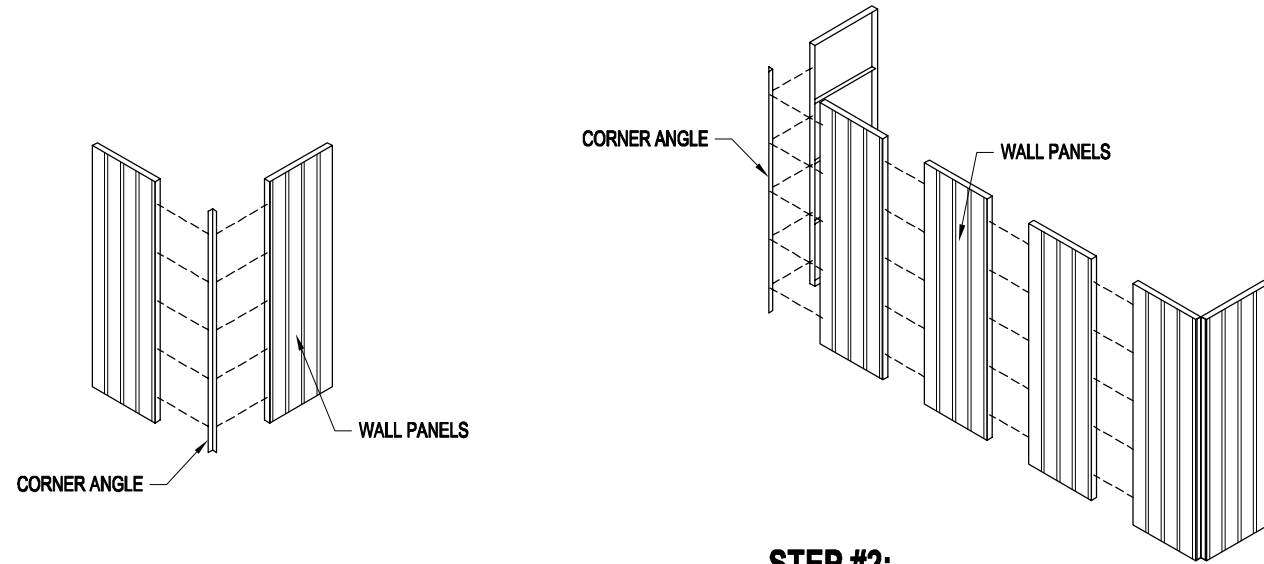
REVISION:
00

DATE:
2/19/15

SCALE:
NO SCALE

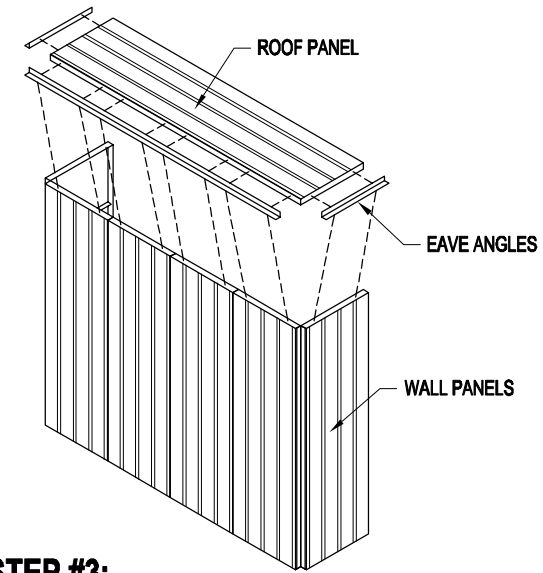
K.K. QUOTE NUMBER:
14022DW1R2

ASSEMBLY SEQUENCE

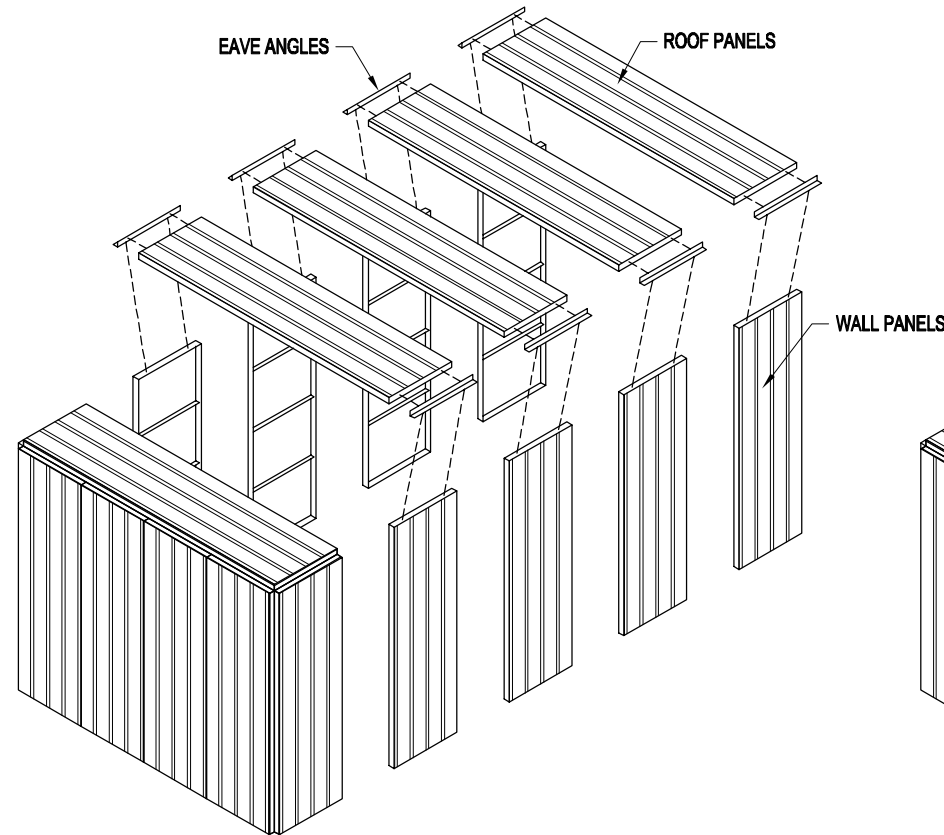


STEP #1:
ASSEMBLE THE FIRST CORNER OF THE BUILDING & ANCHOR IT DOWN.

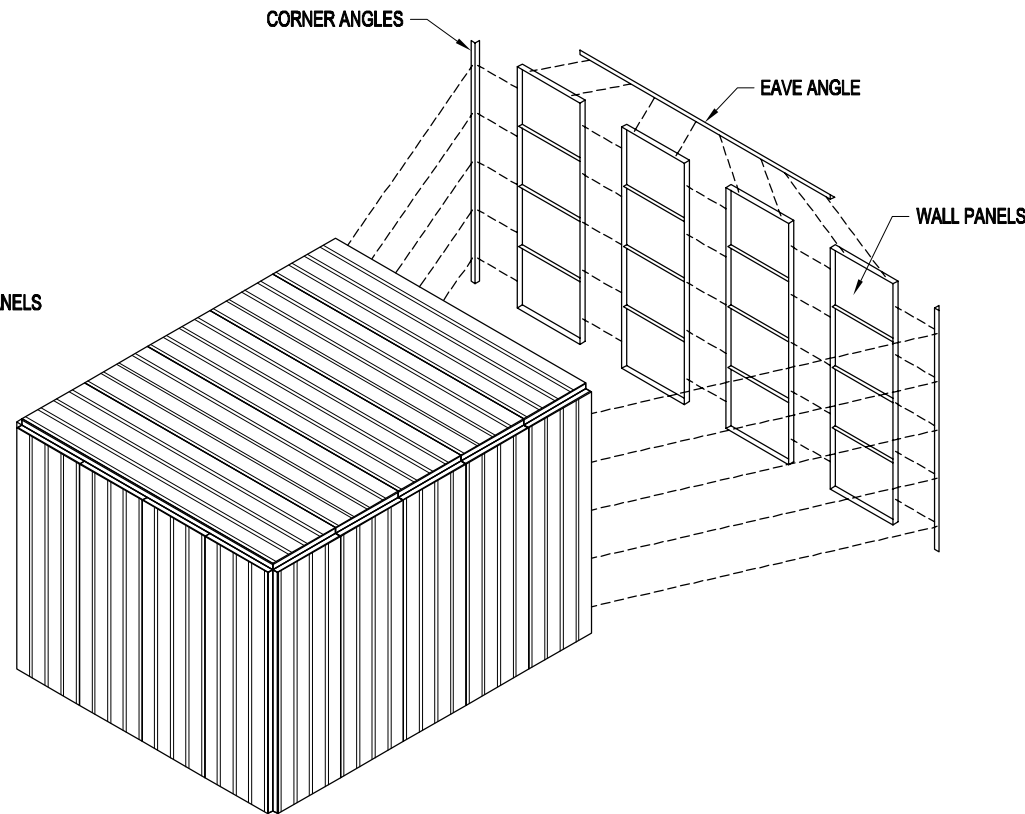
STEP #2:
ATTACH THE REST OF THE END WALL & THE FIRST PANEL OF THE OPPOSITE SIDE WALL. ANCHOR ALL PANELS AFTER THEY ARE IN PLACE.



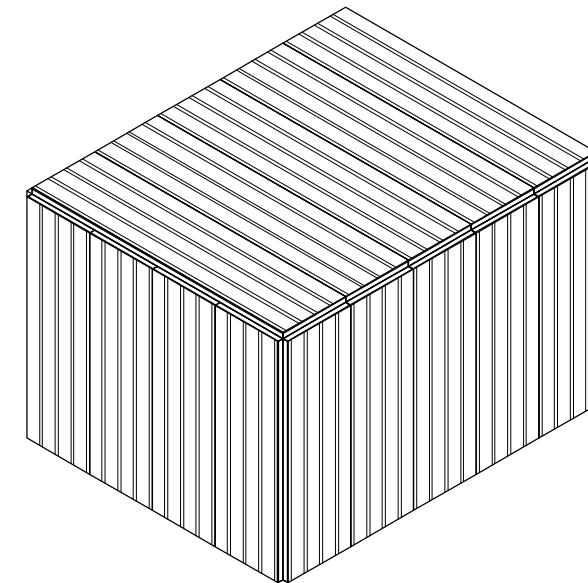
STEP #3:
ATTACH THE EAVE ANGLES TO THE FIRST ROOF PANEL, LIFT IT INTO PLACE, & ATTACH IT TO THE ASSEMBLED SECTION OF THE BUILDING.



STEP #4:
CONTINUE ASSEMBLING SIDE WALL & ROOF SECTIONS UNTIL SIDE WALLS & ROOF ARE COMPLETE. ANCHOR WALL PANELS AS THEY ARE ATTACHED TO THE ASSEMBLED BUILDING SECTION.



STEP #5:
ASSEMBLE THE FINAL END WALL & ANCHOR IT DOWN.



STEP #6:
AFTER ALL PANELS ARE IN PLACE, ALL FLASHING, DOOR HARDWARE, & OTHER ACCESSORIES CAN BE INSTALLED.



Mfr. by Kelly Group, Inc.
P.O. Box 1058
Fremont, NE 68026
Phone: 800-228-7230
Fax: 402-727-1363
Web: www.kellyklosure.com

PAGE TITLE:
**TYPICAL FLAT-ROOF
ASSEMBLY SEQUENCE**
SHEET SS-5 OF SS-5

PROPRIETARY INFORMATION
THIS DRAWING AND THE DESIGN COVERS ARE THE EXCLUSIVE PROPERTY OF KELLY GROUP, INC. NO PART OF THIS DRAWING IS TO BE REPRODUCED, COPIED, LOANED, EXHIBITED, CHANGED OR OTHERWISE USED EXCEPT IN THE LIMITED MANNER AND FOR THE LIMITED PURPOSES AUTHORIZED BY KELLY GROUP, INC. WITHOUT THE WRITTEN PERMISSION OF KELLY GROUP, INC.

PROJECT TITLE:
**MEZANINE ENCLOSURE
DC COOK NUCLEAR
BRIDGMAN, MI 49106**

BUYER:
INDIANA MICHIGAN POWER CO.

K.K. ORDER NUMBER:
9369

BUYER P.O. NUMBER:
01570393

DRAWN BY:
APC

DATE:
10/1/14

APPROVED BY:
E. STEWART

DATE:
1/29/15

REVISION:
00

DATE:
2/19/15

SCALE:
NO SCALE

K.K. QUOTE NUMBER:
14028DW1R2